

COLLECTION

VILMERS

VILMERS FABRIC EUROPEAN COLLECTION 2023



3 CARE SYMBOLS

4 BOLD MICROFIBERS

5 Texas

6 GREEN FIBERS

7 Beryl

8 Olvitine

9 LIKE LEATHER

10 Bull

11 Jersey

12 PURE LEATHER

13 Diamonds

14 Granada

15 Vintage

16 PURE NATURE

17 Sandstone

18 ROUGH STRUCTURE

19 Alis

20 Bergen

21 Coltan

22 Fusion

23 Garnet

24 Marble

25 Oasis

26 Taffie

27 SIMPLY NORDIC

28 Austin

29 Casa

30 Eton

31 Hawks

32 Honey

33 Lapis

34 Lido

35 Livale

36 Natron

37 Nordby

38 Opal

39 Paros

40 Rocky crystal

41 Sneak

42 Unit

43 SMOOTH VELVET

44 Adore

45 Seven

46 Velvetlux

47 CHUNKY CORDUROY

48 Lisboa

CARE SYMBOLS



Wash at or below
(degrees in Celsius/Fahrenheit).



Do not wash.



Iron cool.



Do not iron.



Dry clean.



Do not dry clean.



Do not tumble dry.



Water-resistant.



Easy care.



Sustainable.

BOLD

MICROFIBERS

Enduring and easy to clean.

Composition | 55% PES, 40% PU, 5% CO
Martindale | 60 000
Lightfastness | 4-5
Pilling | 4-5

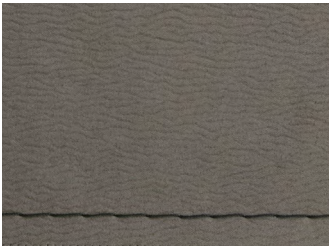


TEXAS

CAT 3



GREEN
Stitching Stone Grey



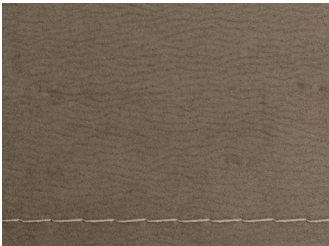
LIGHT GREY
Stitching Dark Grey



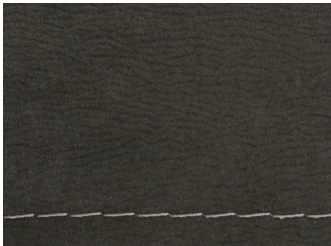
COGNAC
Stitching Saddle Brown



IVORY
Stitching Pastel Brown



SILVER
Stitching Silk Grey



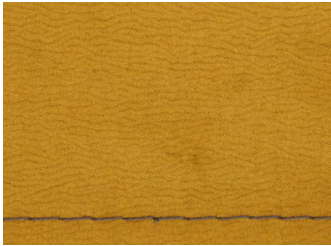
DARK GREY
Stitching Light Grey



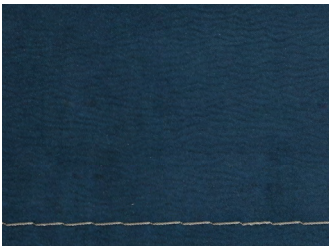
GREY
Stitching Chocolate



ELEPHANT
Stitching Stone Grey



YELLOW
Stitching Chocolate



BLUE
Stitching Grey

GREEN

FIBERS

Sustainable fabrics.

Composition | 55% RPES, 36% PES, 9% RCO

Martindale | 70 000

Lightfastness | 5

Pilling | 5



BERYL

CAT 3

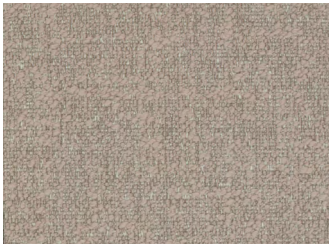
Boucle fabric



BRIGHT WHITE



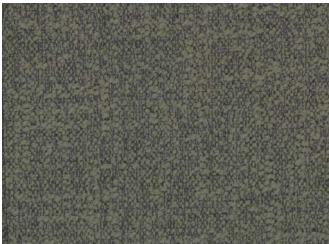
RAINY DAY



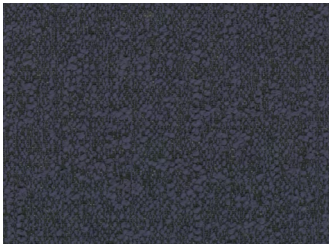
ALUMINIUM



CHOCOLATE
BROWN



MYRTLE



BLUE NIGHTS



ANTHRACITE

Composition | 100% RPP
Martindale | 45 000
Lightfastness | 5
Pilling | 5



OLVITINE

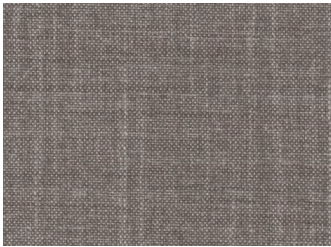
CAT1
Flat woven fabric



RAINY DAY



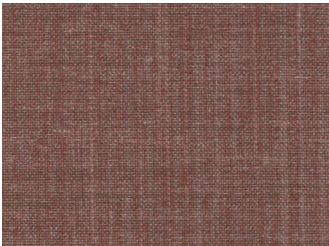
CORNSTALK



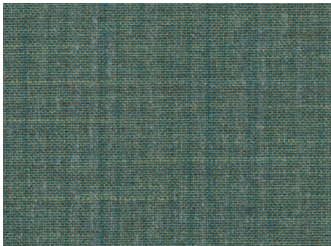
MOON ROCK



CHOCOLATE
BROWN



COPPER
BROWN



MYRTLE



STEEL GREY

LIKE

LEATHER

Sustainable leather.

Composition | 96% PES, 4% PU

Martindale | 32 000

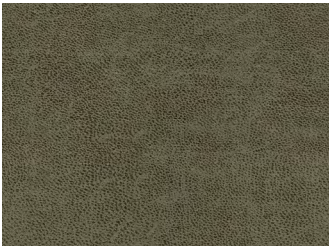
Lightfastness | 3-4

Pilling | 3-4



BULL

CAT 4



FOREST



GRAPHITE



BROWN



GREY



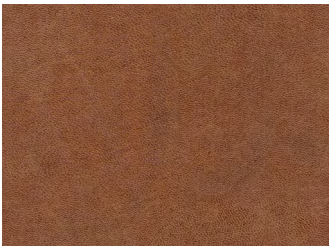
CAMEL



LIVER



NIAGARA



COGNAC



BRANDY



ANTHRACITE

Composition | 40% PES, 30% LEATHER, 30% AF

Martindale | 30 000

Lightfastness | 4

Pilling | 4-5



JERSEY

CAT 5



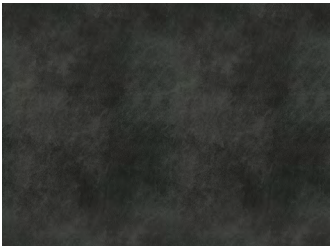
MOSS



DARK GREY



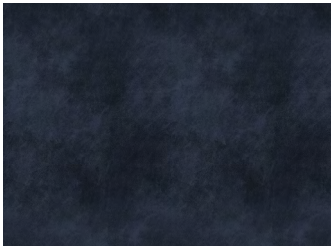
COGNAC



TABACCO



STONE



DARK BLUE

PURE

LEATHER

Natural leather.

Composition | 100% leather

Martindale | –

Lightfastness | 5

Pilling | –



DIAMONDS

CAT Leather A



BRIGHT WHITE
Stitching Silk Grey



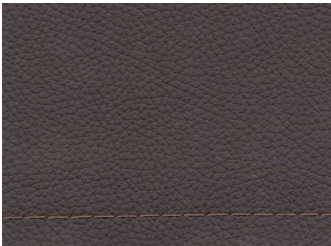
CORNSTALK
Stitching Stone Grey



STING
Stitching Bisque



WALNUT
Stitching Stone Grey



CHOCOLATE
BROWN
Stitching Bisque



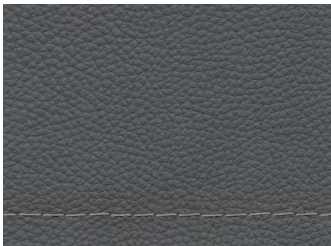
COPPER BROWN
Stitching Cafe



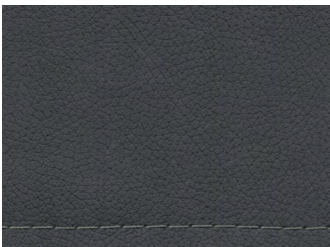
KARANDA RED
Stitching Latte



ASH
Stitching White



ANTRACITE
Stitching Grey Aluminium



BRISTOL BLACK
Stitching Grey

Composition | 100% leather

Martindale | –

Lightfastness | 4–5

Pilling | –



GRANADA

CAT Leather B



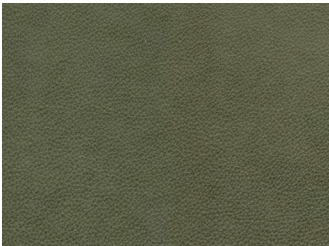
SAVANNAH



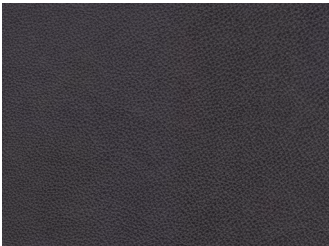
TAUPE



ASH



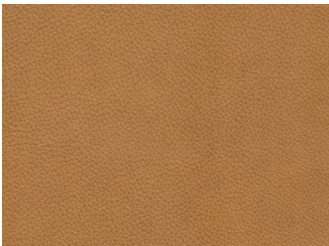
MOSS



GRAPHITE



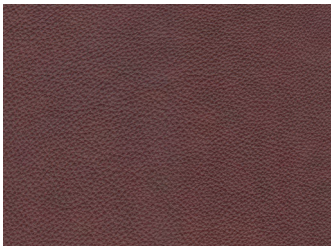
STEEL



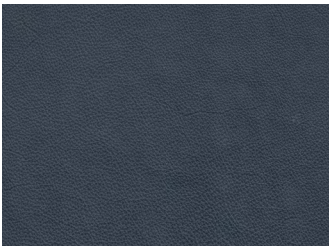
SAHARA



OLIVE



COGNAC



BLUE

Composition | 100% aniline leather

Martindale | –

Lightfastness | 3

Pilling | –



VINTAGE

CAT Leather B



COGNAC



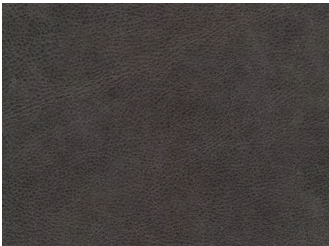
BROWN



OLIVE



TAUPE



GREY

PURE

NATURE

Natural fibers.

Composition | 63% CO, 37% LI

Martindale | 32 500

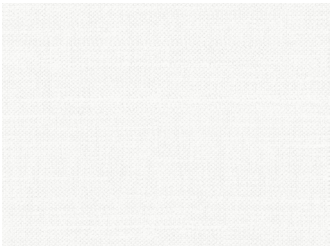
Lightfastness | 3

Pilling | 4

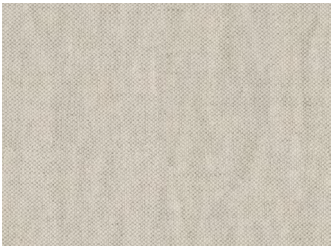


SANDSTONE

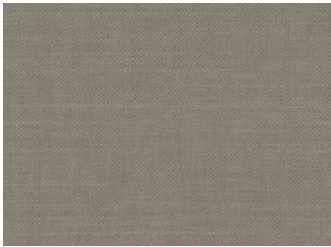
CAT 4



BRIGHT WHITE



PARCHMENT



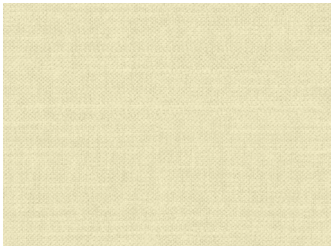
ALUMINIUM



CHOCOLATE
BROWN



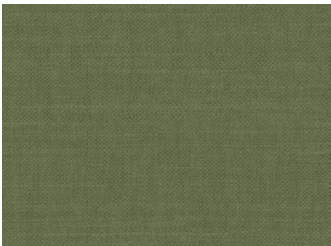
COPPER BROWN



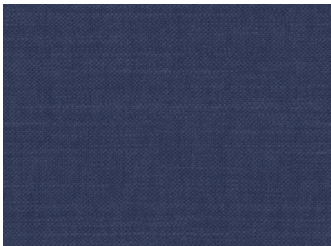
SMOKE GREY



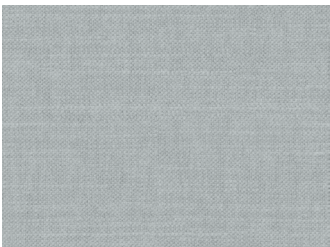
CORNSTALK



TEA



BLUE NIGHTS



MIRAGE GREY



ASH

ROUGH

STRUCTURE

Fabrics with character.

Composition | 53% PES, 35% PAN, 6% CO, 6% CV

Martindale | 25 000

Lightfastness | 4-5

Pilling | 4-5



ALIS

CAT 2

Chenille fabric



BEIGE



ANTRACIT



GREEN



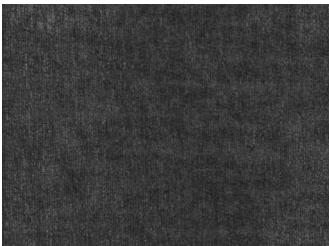
ECRU



MIDNAITT



GRA



GRAFIT



LYS GRA



CINNAMON

Composition | 100% PES
Martindale | 100 000
Lightfastness | 5
Pilling | 5



BERGEN

CAT 2



BRIGHT WHITE



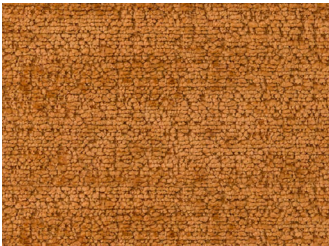
RAINY DAY



NAUGAT



CORNSTALK



TOBACCO BROWN



BRISTOL BLACK



STAPLE GREY



JET STREAM

Composition | 100% PES
Martindale | 100 000
Lightfastness | 4-5
Pilling | 4



COLTAN

CAT 3
Boucle fabric



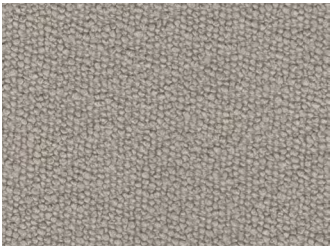
BRIGHT WHITE



RAINY DAY



CORNSTALK



ALUMINUM



CHOCOLATE BROWN



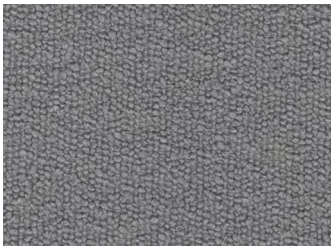
COPPER BROWN



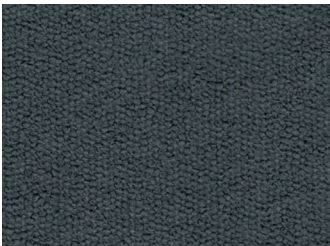
MYRTLE



BLUE NIGHTS



ASH



BRISTOL BLACK

Composition | 100% PES

Martindale | 85 000

Lightfastness | 5

Pilling | 4-5



FUSION

CAT 2

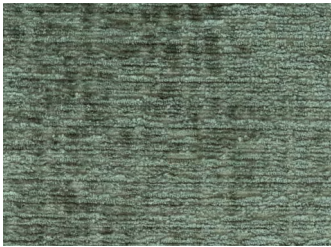
Chenille fabric



INDIGO



CREAM



THYME



ANTHRACITE



WOOD



BRANDY



ARMY



COGNAC

Composition | 100% PES

Martindale | 100 000

Lightfastness | 5

Pilling | 4-5



GARNET

CAT 3

Chenille fabric



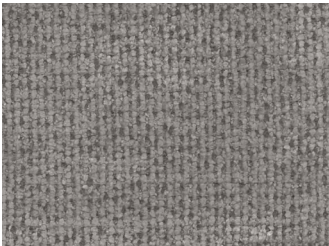
BRIGHT WHITE



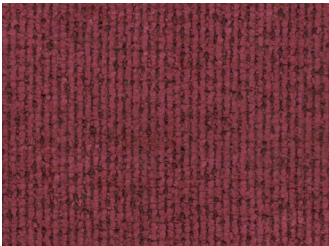
ALUMINIUM



CORNSTALK



MOON ROCK



KARANDA RED



MYRTLE



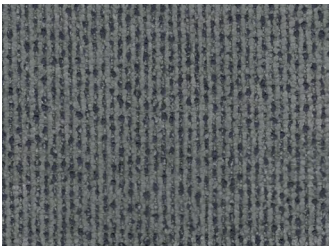
SMOKE BLUE



BLUE NIGHTS



ASH



STEEL GREY

Composition | 90% PES, 10% N

Martindale | 40 000

Lightfastness | 4

Pilling | 4



MARBLE

CAT1

Micro Chenille fabric



PASTEL
PARCHMENT



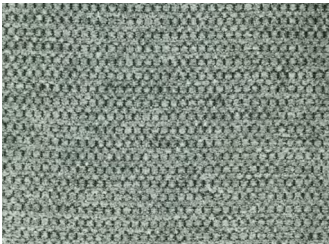
RAINY DAY



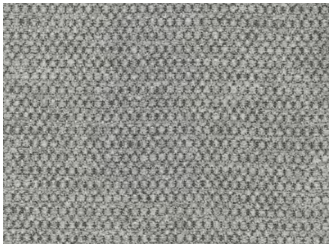
SILVER BIRCH



PINENEEDLE



MIRAGE GREY



ASH



SMOKE BLUE



STEEL GREY



MOONLESS
NIGHT

Composition | 100% PES
Martindale | 100 000
Lightfastness | 5
Pilling | 4

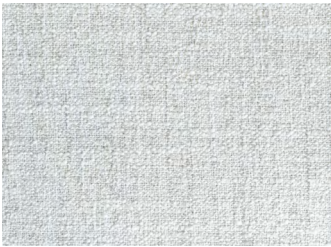


OASIS

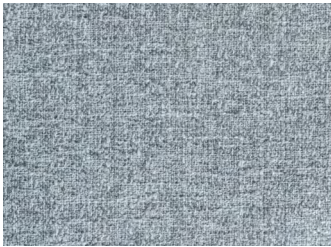
CAT 2
Chenille fabric



SHELL



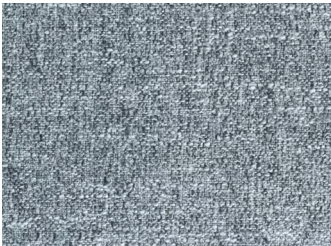
NATUREL



ASH GREY



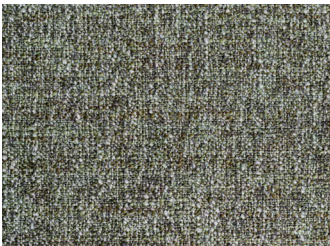
DARK BLUE



GREY



WOOD



TURTLE



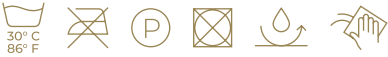
LAVA

Composition | 48% PES, 37% PAN, 8% CO, 7% WO

Martindale | 35 000

Lightfastness | 5

Pilling | 3-4



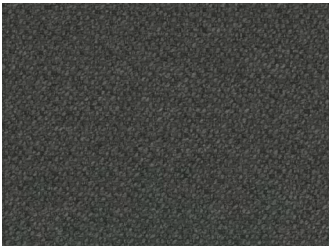
TAFFIE

CAT 4

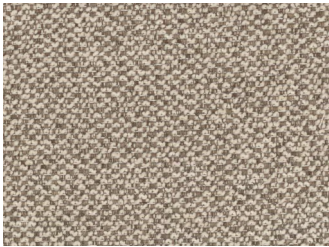
Boucle fabric



ECRU



GRAFFIT



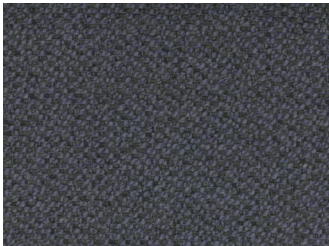
LATTE



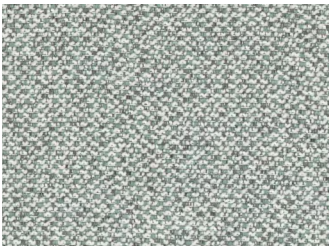
SILVER



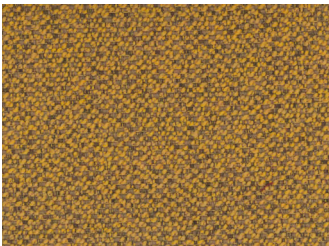
GREEN



GRÅ



GRANIT



YELLOW

SIMPLY

NORDIC

Scandinavian inspired fabrics.

Composition | 100% PES

Martindale | 115 000

Lightfastness | 4-5

Pilling | 4



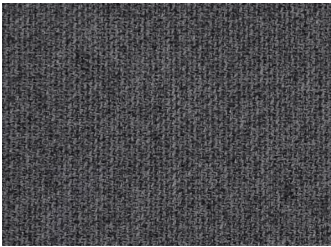
AUSTIN

CAT 2

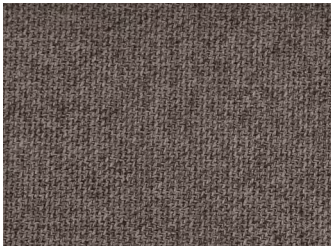
Micro Chenille fabric



LYS GRÅ



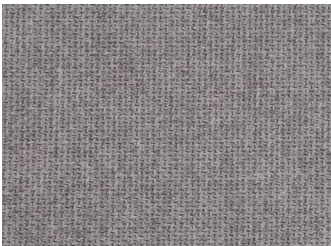
GRÅ



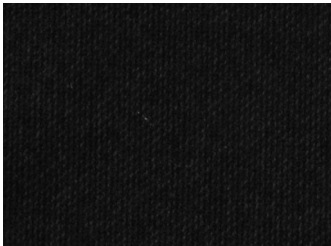
MULDVAD



BEIGE



SILVER



SORT



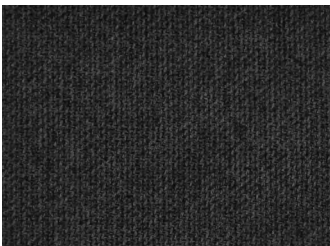
GOLDEN
YELLOW



GRØNN



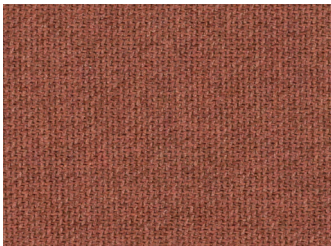
DYP BLÅ



MØRK GRÅ



BRUN



RUST

Composition | 100% PES

Martindale | 50 000

Lightfastness | 5

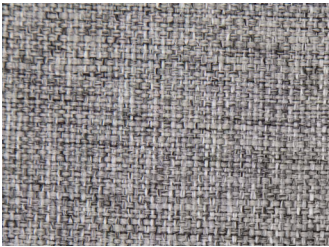
Pilling | 4-5



CASA

CAT1

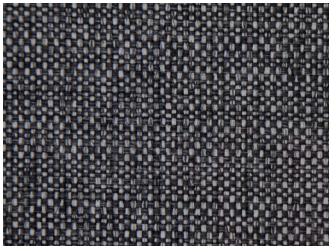
Flat woven fabric



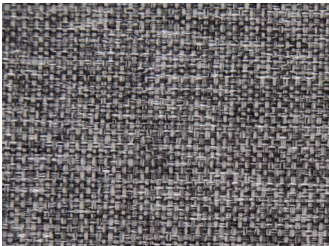
STONE



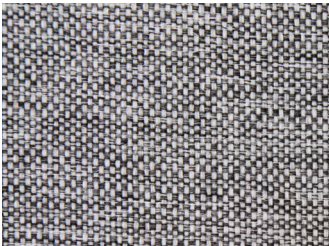
NIGHT



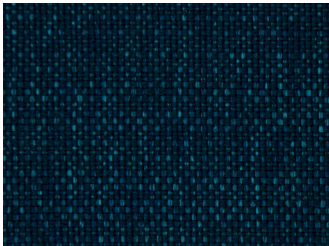
GRANIT



DARK GREY



SILVER



BLUE



TAUPE

Composition | 100% PES
Martindale | 35 000
Lightfastness | 4-5
Pilling | 4

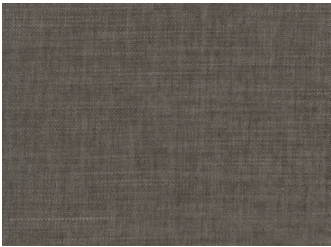


ETON

CAT 2
Chenille fabric



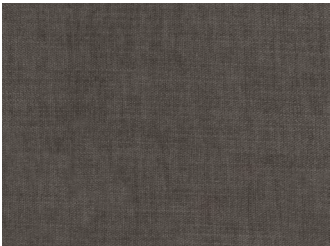
LIGHT GREY



WATER GREEN



CEMENT



ASH



TRUFA



SKY



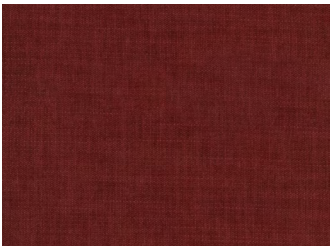
MOUSE



TURQUOISE



PINK



RED

Composition | 100% PES

Martindale | 85 000

Lightfastness | 5

Pilling | 4



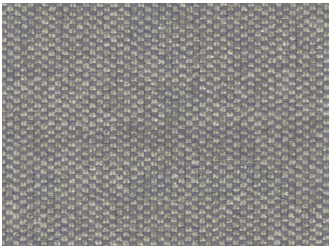
HAWKS

CAT 2

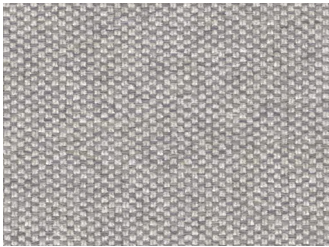
Chenille fabric



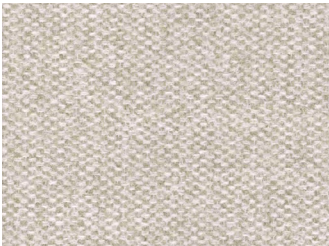
ASH



MIRAGE GREY



MOONSTRUCK



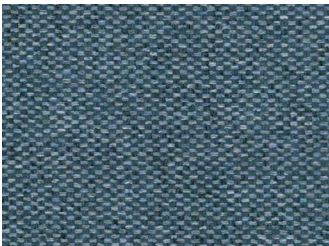
PASTEL
PARCHMENT



MOONLESS
NIGHT



STEEL GREY



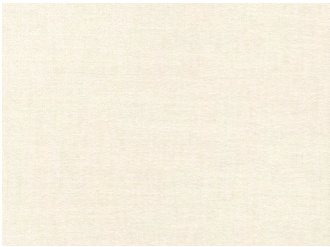
INFINITY

Composition | 100% PES
Martindale | 100 000
Lightfastness | 4-5
Pilling | 4



HONEY

CAT 3



JET STREAM



CORNSTALK



PINE BARK



SPICED APPLE



MOONSTONE



MARTINI OLIVE



URBAN CHIC



PALOMA



MOON ROCK



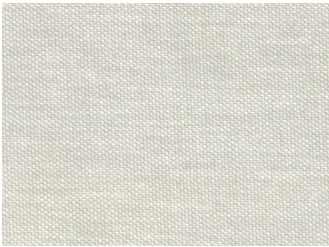
PISTOL BLACK

Composition | 100% PES
Martindale | 100 000
Lightfastness | 4
Pilling | 4-5



LAPIS

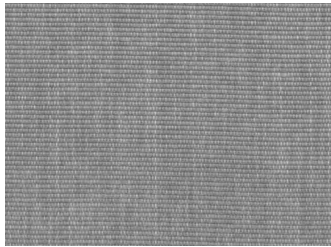
CAT 2
Chenille fabric



PARCHMENT



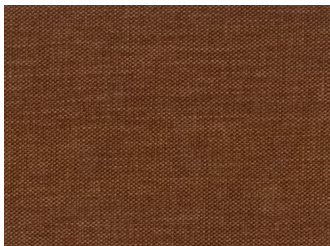
SMOKE GREY



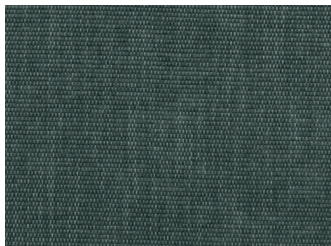
KHAKI



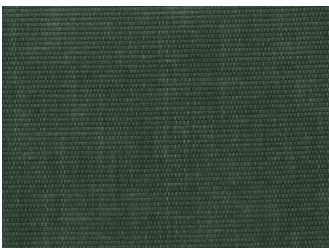
PINE BARK



COPPER BROWN



URBAN GREEN



WILLOW BOUGH



BRISTOL BLACK

Composition | 92% PES, 8% N

Martindale | 40 000

Lightfastness | 5

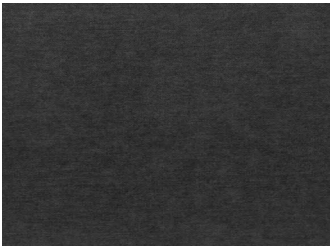
Pilling | 5



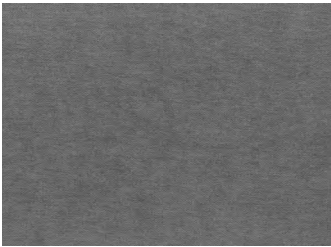
LIDO

CAT 2

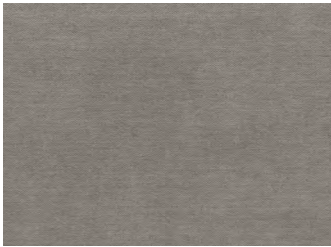
Micro chenille fabric



ANTRACIT



GREY



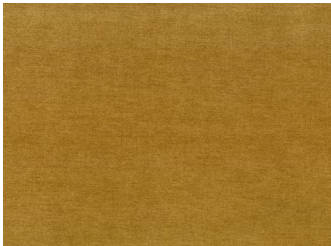
LIGHT BROWN



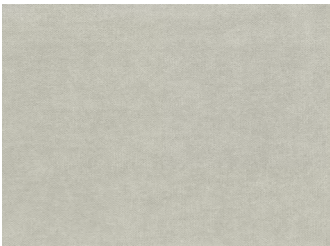
INK BLUE



BEIGE



CUSTARD



LIGHT GREY



BROWN



OLIVE



MARINE

Composition | 100% PES

Martindale | 35 000

Lightfastness | 4-5

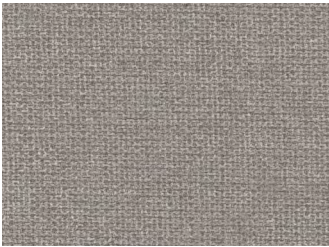
Pilling | 4-5



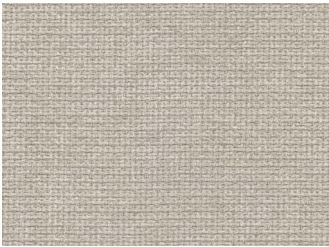
LIVALE

CAT 2

Chenille fabric



BEIGE



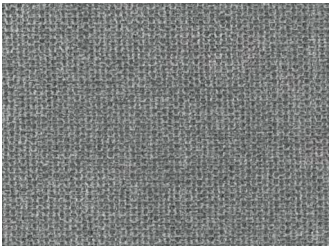
ECRU



BLUE



DARK GREY



GRANITE



FOREST

Composition | 95% PES, 5% CO

Martindale | 55 000

Lightfastness | 4

Pilling | 4



NATRON

CAT 4

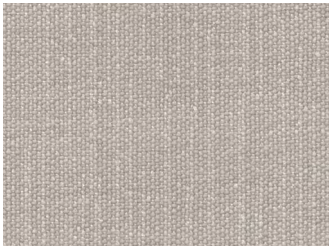
Chenille fabric



BRIGHT WHITE



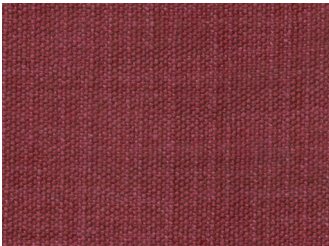
SMOKE GREY



ALUMINIUM



STUCCO



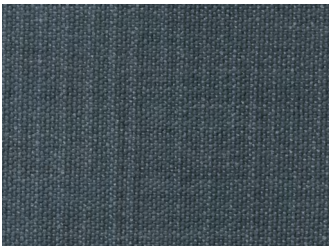
MARSALA



CORNSTALK



PINENEEDLE



BLUE NIGHTS



ASH



STEEL GREY

Composition | 100% PES

Martindale | 50 000

Lightfastness | 5

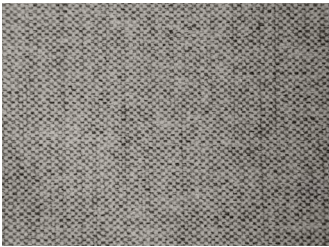
Pilling | 4-5



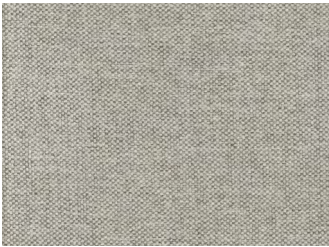
NORDBY

CAT 2

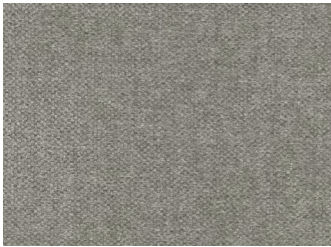
Chenille fabric



GREY



WHITE



SILVER



ASH



STEEL



PETROL



ALU



NAVY



GREEN

Composition | 66% RPP, 34% PES

Martindale | 35 000

Lightfastness | 5

Pilling | 5



OPAL

CAT 3

Chenille fabric



LINEN



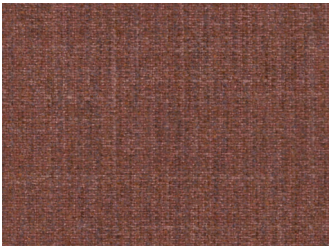
ALUMINIUM



MOON ROCK



CHOCOLATE
BROWN



COPPER BROWN



BLUE NIGHTS



ASH



STEEL GREY

Composition | 46% PAN, 36% PES, 18% PV

Martindale | 35 000

Lightfastness | 4-5

Pilling | 4-5



PAROS

CAT 2

Chenille fabric



SAND



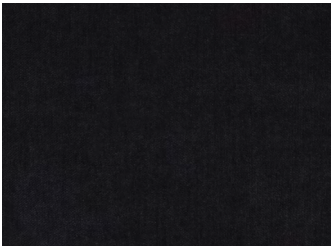
LIGHT GREY



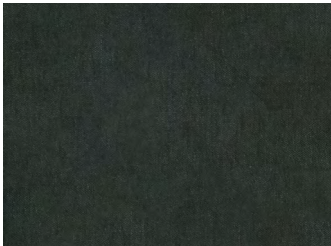
MARINE



IVORY



MIDNIGHT BLUE



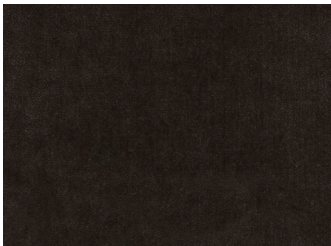
GREEN



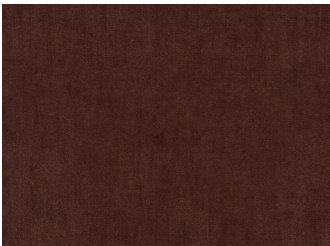
GRAFITT



BLÅ



BROWN



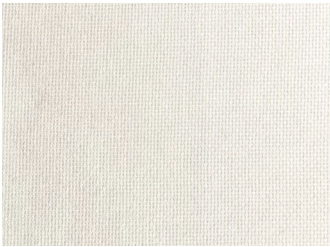
RUST

Composition | 100% PES
Martindale | 100 000
Lightfastness | 4
Pilling | 4

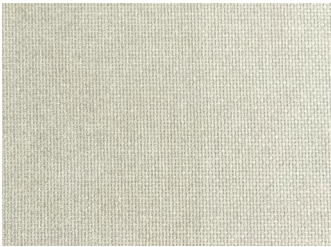


ROCKY CRYSTAL

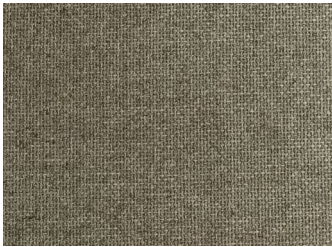
CAT1
Flat woven fabric



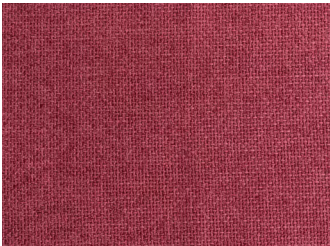
MOONSTRUCK



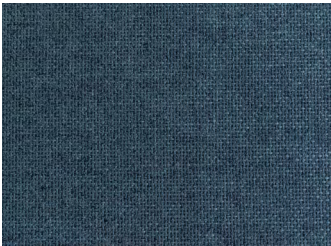
RAINY DAY



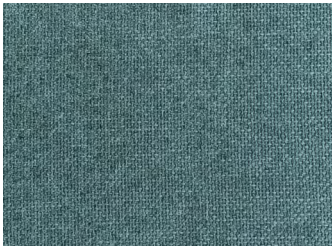
ALUMINIUM



MARSALA



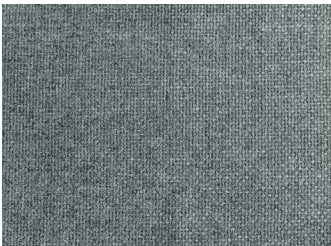
BLUE NIGHTS



SMOKE BLUE



ASH



STEEL GREY

Composition | 100% PES

Martindale | 38 000

Lightfastness | 4-5

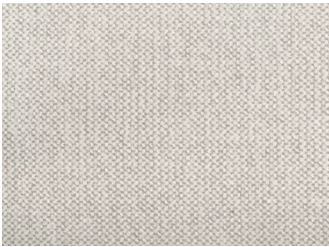
Pilling | 4-5



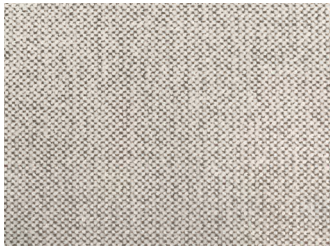
SNEAK

CAT 2

Chenille fabric



MOONSTRUCK



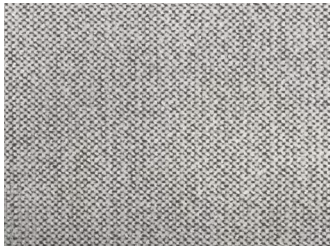
STUCCO



SESAME



CORNSTALK



STEEL GREY



LIVER



STEEL



GREY



ANTHRACITE

Composition | 85% PES, 15% CO

Martindale | 35 000

Lightfastness | 4-5

Pilling | 4-5



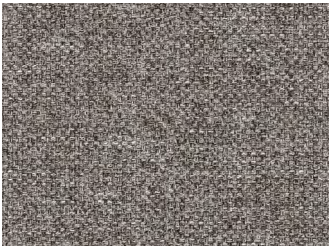
UNIT

CAT 2

Flat woven fabric



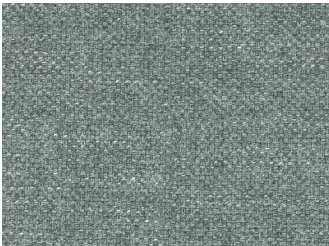
LIGHT GREY



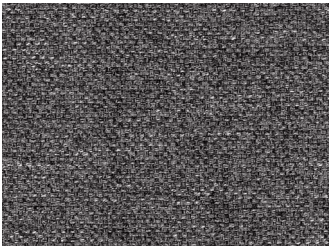
STONE



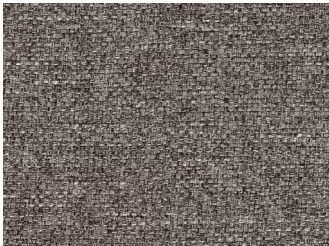
SESAME



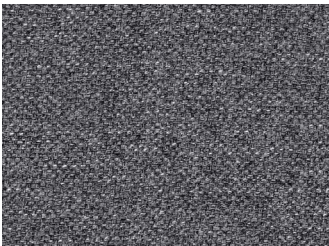
AQUA



DARK GREY



TAUPE



DENIM



ANTHRACITE



BROWN

SMOOTH

VELVET

Woven and knitted velvet.

Composition | 100% PES
Martindale | 88 000
Lightfastness | 5
Pilling | 5



ADORE

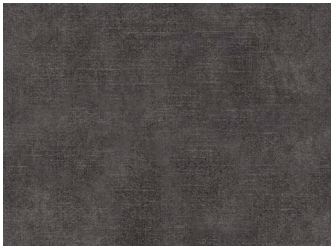
CAT 2



ANTHRACITE



HUNTER



DARK GREY



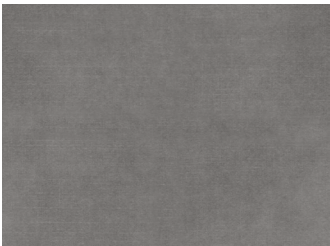
GOLD



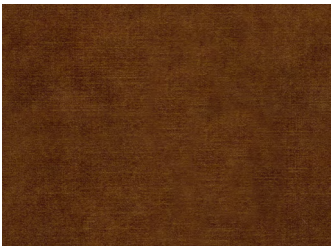
PETROL



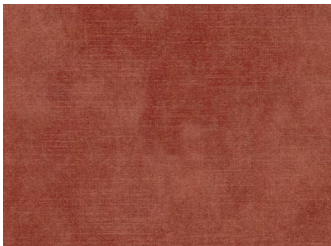
COPPER



STEEL



COGNAC



BLUSH



INDIGO



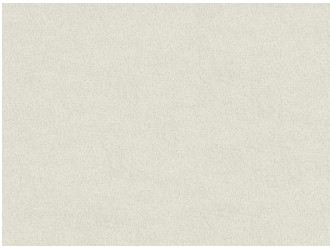
MOSS

Composition | 100% PES
Martindale | 100 000
Lightfastness | 4
Pilling | 4-5

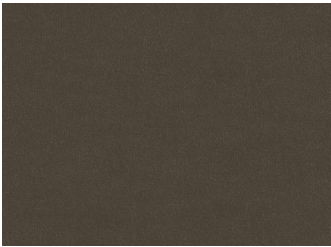


SEVEN

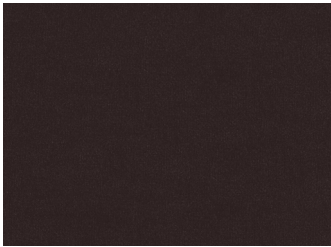
CAT 2



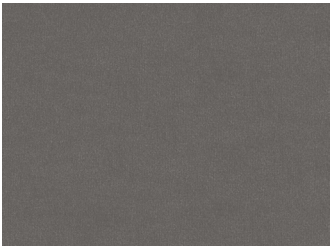
IVORY



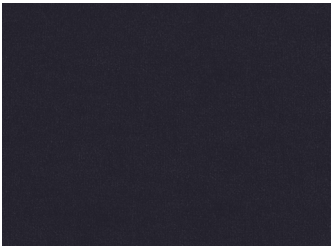
SHITAKE



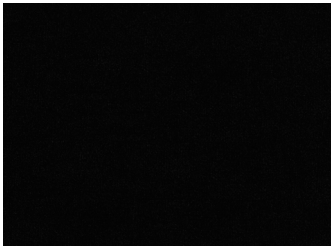
LIVER



DOLPHIN



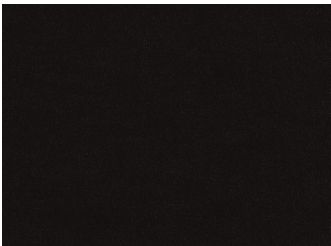
ANTHRACITE



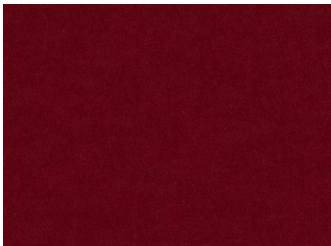
ONYX



DARK BLUE



ESPRESSO



SCARLET

Composition | 81% PES, 19% PV

Martindale | 45 000

Lightfastness | 4-5

Pilling | 4-5

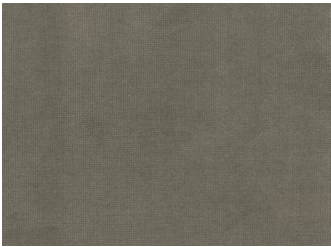


VELVETLUX

CAT 4



MIDNIGHT BLUE



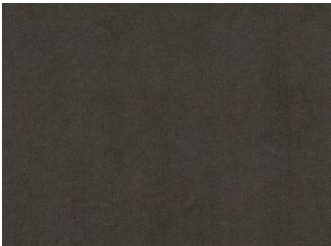
SAND



ANTHRACITE



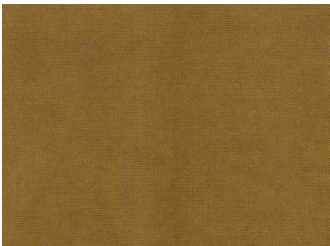
DUSTY GREEN



DARK BROWN



NAVY BLUE



OKER



PETROL

CHUNKY

CORDUROY

The timeless fabric.

Composition | 92% PES, 8% PAC

Martindale | 45 000

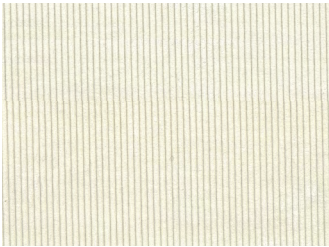
Lightfastness | 4

Pilling | 4-5

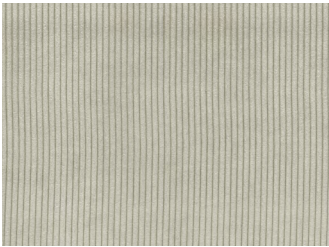


LISBOA

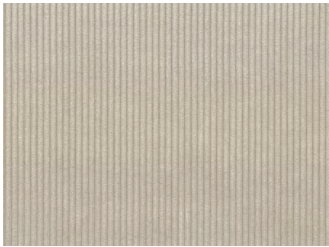
CAT1



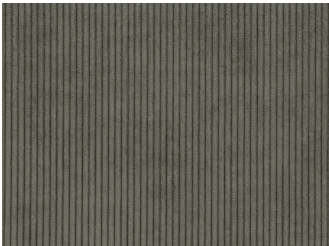
WHITE



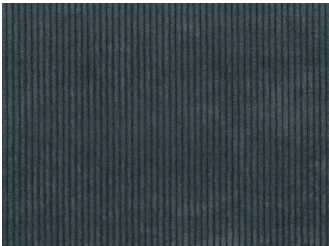
IVORY



SAND



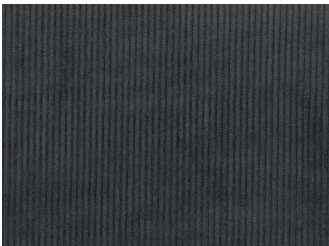
BROWN



DUSTY BLUE



ELEPHANT



ANTRACIT

VILMERS

Rest assured.

