

MASCA

Colors of *Beauty*



MASCA

Italian light experience



MASCA

Il colore genera emozioni ma può vivere solo grazie alla luce.

Un'illuminazione adeguata non solo completa un arredamento ma condiziona lo stato d'animo, altera le percezioni, modifica le forme.

Ogni elemento, superficie e decoro appaiono privi di anima se non vengono accarezzati dal dolce tocco della luce.

E' la luce quindi il trait d'union tra l'uomo e l'ambiente in cui vive.

Inserendo una creazione Masca all'interno del nostro arredo si percepisce tutto questo nell'arco di un attimo.

Grazie ad essa si accendono i nostri sensi che danno colore alle nostre emozioni.

I colori della bellezza.

Color evokes emotions but it only comes to life thanks to light.

Appropriate lighting not only completes furnishings but also influences the mood, perceptions and shapes of interior design.

Every unit, surface and decoration is soulless if it is not bathed in soft light.

Light is therefore the unifying trait between man and the environment in which he lives.

By installing a Masca creation in your home this can be perceived instantly.

The perception stirs our senses and colors our emotions.

Colors of beauty.

Цвет порождает эмоции, но он существует только благодаря свету.

Подходящий свет не только дополняет интерьер, но и влияет на состояние души, усиливает восприятие, меняет формы.

Любой элемент, поверхность или декор кажутся лишенными души, если они не обласканы сладким прикосновением света.

Свет - это связующее звено между человеком и пространством, в котором он проживает.

Поместив творение от Masca в интерьер, это становится очевидным уже спустя мгновение.

Благодаря этому освещению зажигаются все чувства, которые дарят цвета эмоциям.

Цвета красоты.

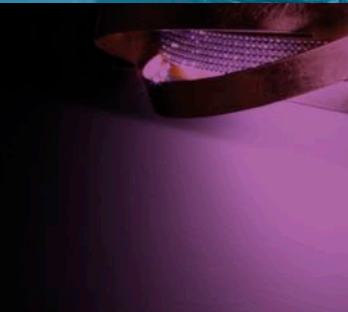
Leonardo Scagli
President



SIBERIA
pag 8



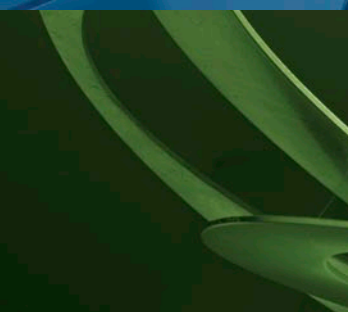
MARRAKECH
pag 18



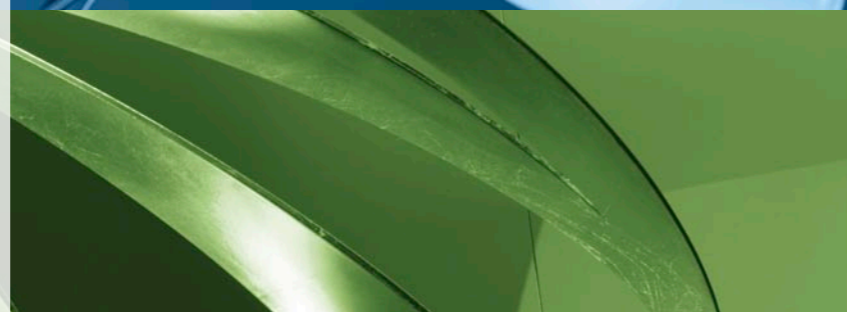
VIRGOLA / TWIST
pag 24



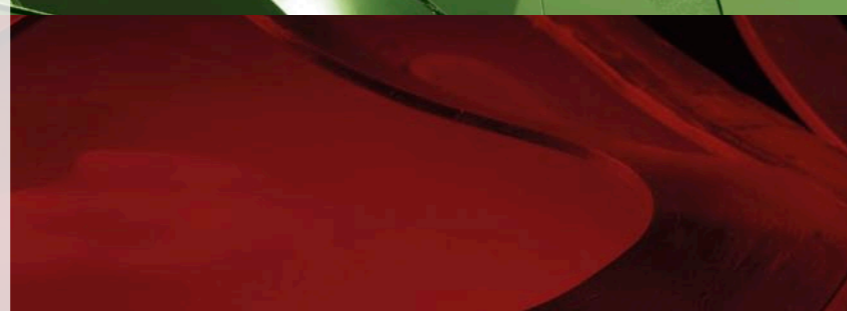
ARMONIA
pag 30



LOOP
pag 36



GIOIELLO
pag 42



DOGE
pag 48



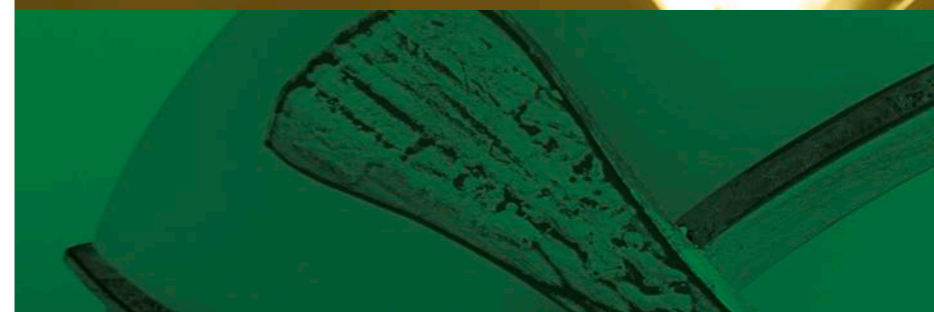
IRIDE
pag 52



PARFUM
pag 58



FLORENTIA
pag 66



TUSCANIA
INTRECCIO
pag 72



SHANGHAI
pag 78





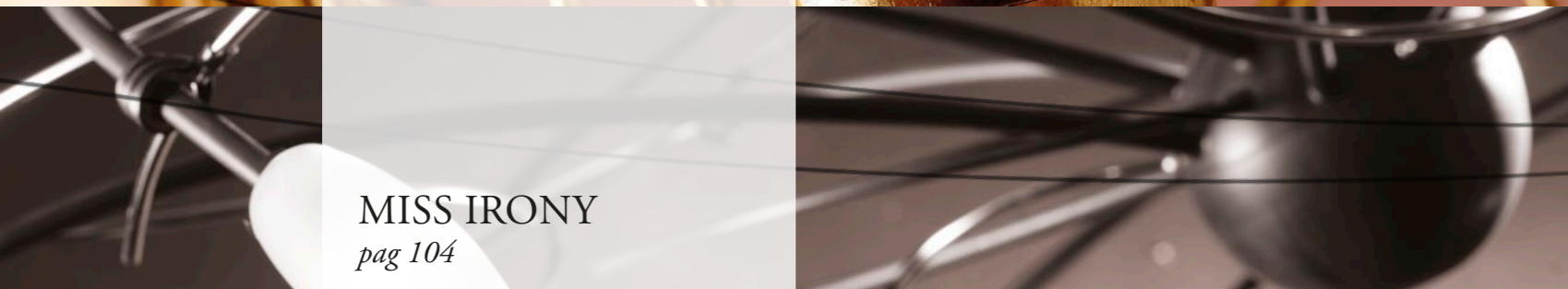
LUNA
pag 84



FONTANA
pag 90



FUTURA
pag 96



MISS IRONY
pag 104

Colors of *Beauty*



SIBERIA

designer Arch. Leonardo Scagli



↑ **1818/10 SIBERIA Oro acido**
 Glass 414 - Ø cm 104x92 h
 Hal 10 x max 60W G9

↗ **1818/5PL SIBERIA Oro acido**
 Glass 414 - Ø cm 80x40 h
 Hal 5 x max 60W G9

→ **1818/A2 SIBERIA Oro acido**
 Glass 414 - h cm 40x40x24
 Hal 2 x max 60W G9





← **1818/1SG SIBERIA Argento acido**
Glass 500 - Ø cm 21x35 h
Electronic Lamp E27 max 30W

↖ **1818/A2 SIBERIA Argento acido**
Glass 414 - h cm 40x40x24
Hal 2 x max 60W G9

↑ **1818/5 SIBERIA Argento acido**
Glass 414 - Ø cm 64x74 h
Hal 5 x max 60W G9



↑ **1818/A1 SIBERIA Bianco oro**
 Glass 414 - h cm 40x12x22
 Hal max 40W G9



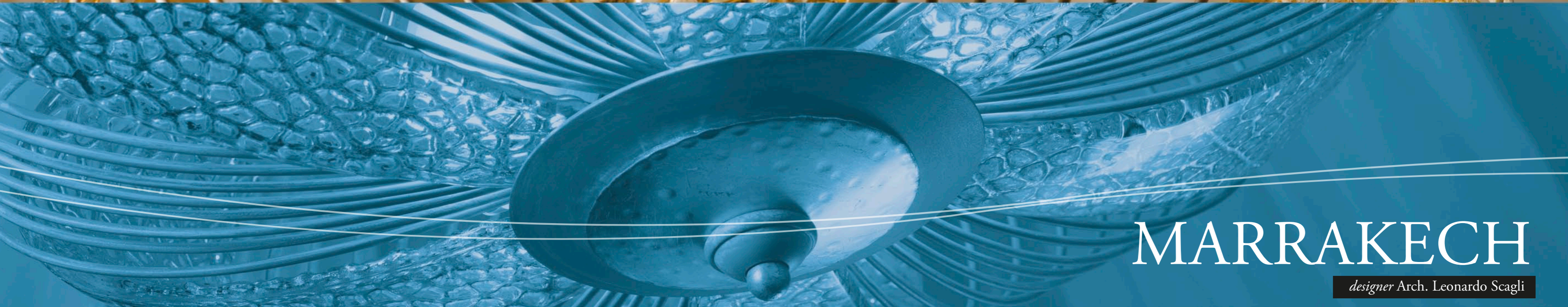
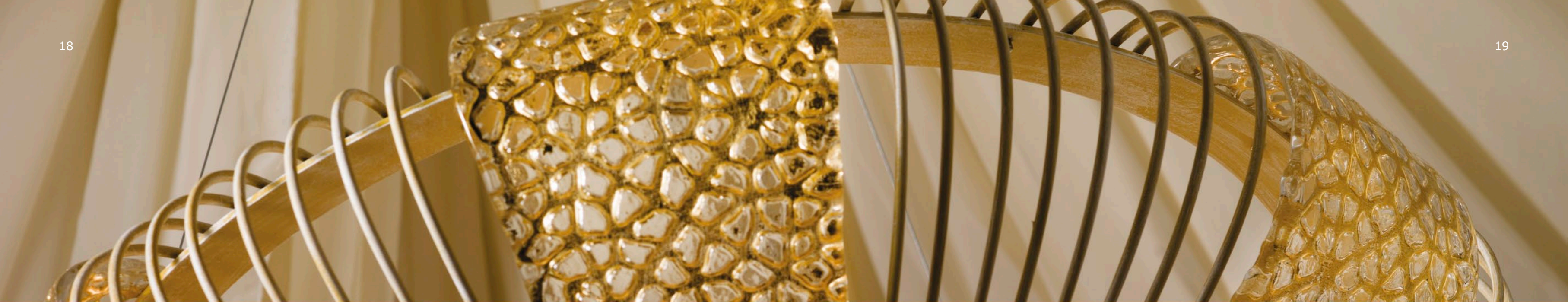
→ **1818/16 SIBERIA Bianco oro**
 Glass 414 - Ø cm 120x120 h
 Hal 16 x max 60W G9



← **1818/P1 SIBERIA Argento acido**
 Glass 500 - Ø cm 32x180 h
 Hal max 150W E27

↖ **1818/3SR SIBERIA Argento acido**
 Glass 414 - Ø cm 40 x max 80 h
 Hal 3 x max 40W G9

↑ **1818/24 SIBERIA Bianco oro**
 Glass 498 - Ø cm 190x183 h
 Hal 24 x max 60W G9



MARRAKECH

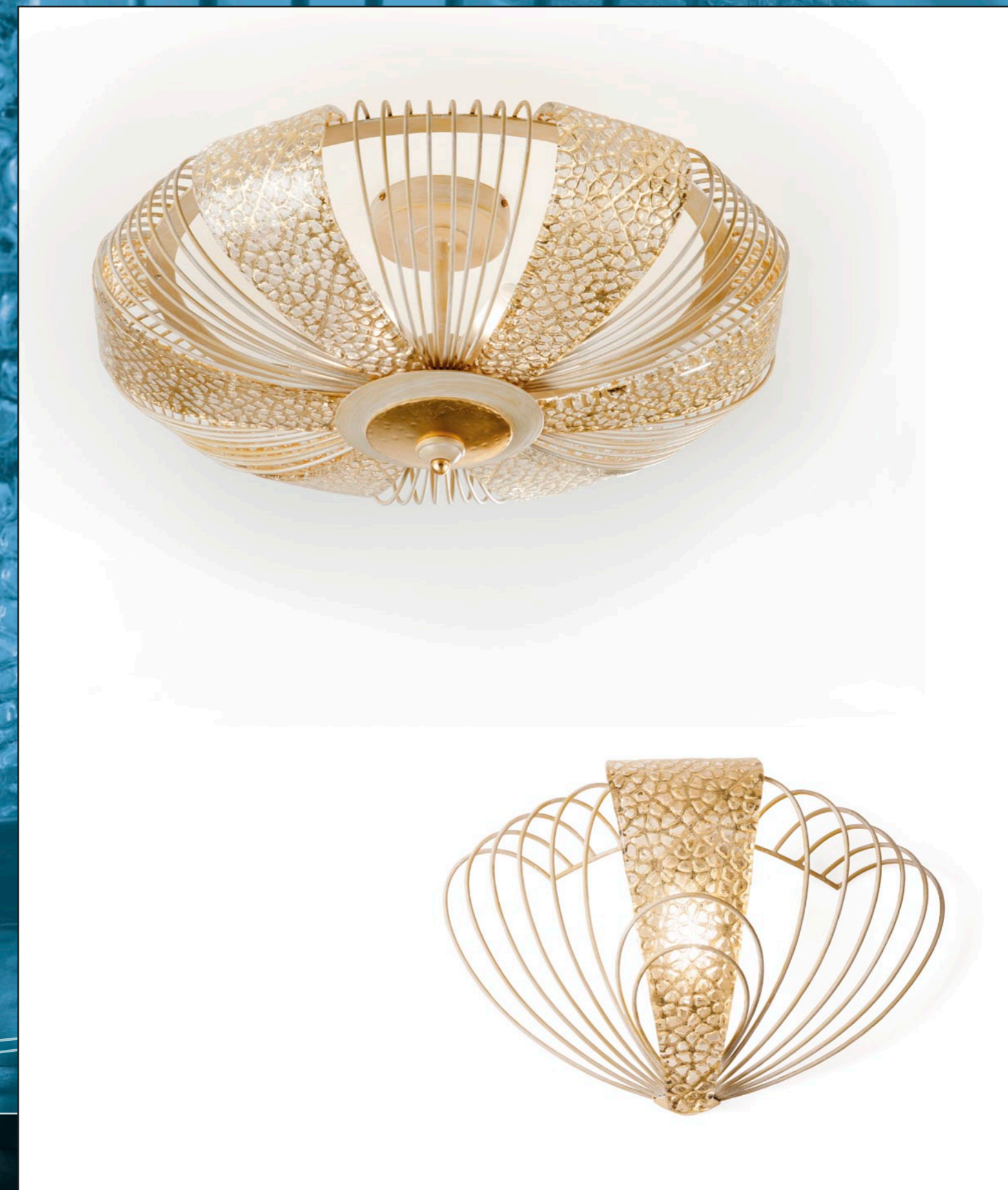
designer Arch. Leonardo Scagli





← **1871/9S MARRAKECH Corten argento**
 Glass 593 - Ø cm 102 x h min 55 - max 130
 Hal 9 x max 60W E14

↑ **1871/A1 MARRAKECH Corten Argento**
 Glass 592 - h cm 32x44x13
 Hal max 150W R7s



↑ **1871/6S MARRAKECH**
Oro decapé
 Glass 592 - Ø cm 64 x h min 55 - max 100
 Hal 6 x max 40W G9

↗ **1871/6PL MARRAKECH**
Oro decapé
 Glass 592 - Ø cm 64x30 h
 Hal 6 x max 40W G9

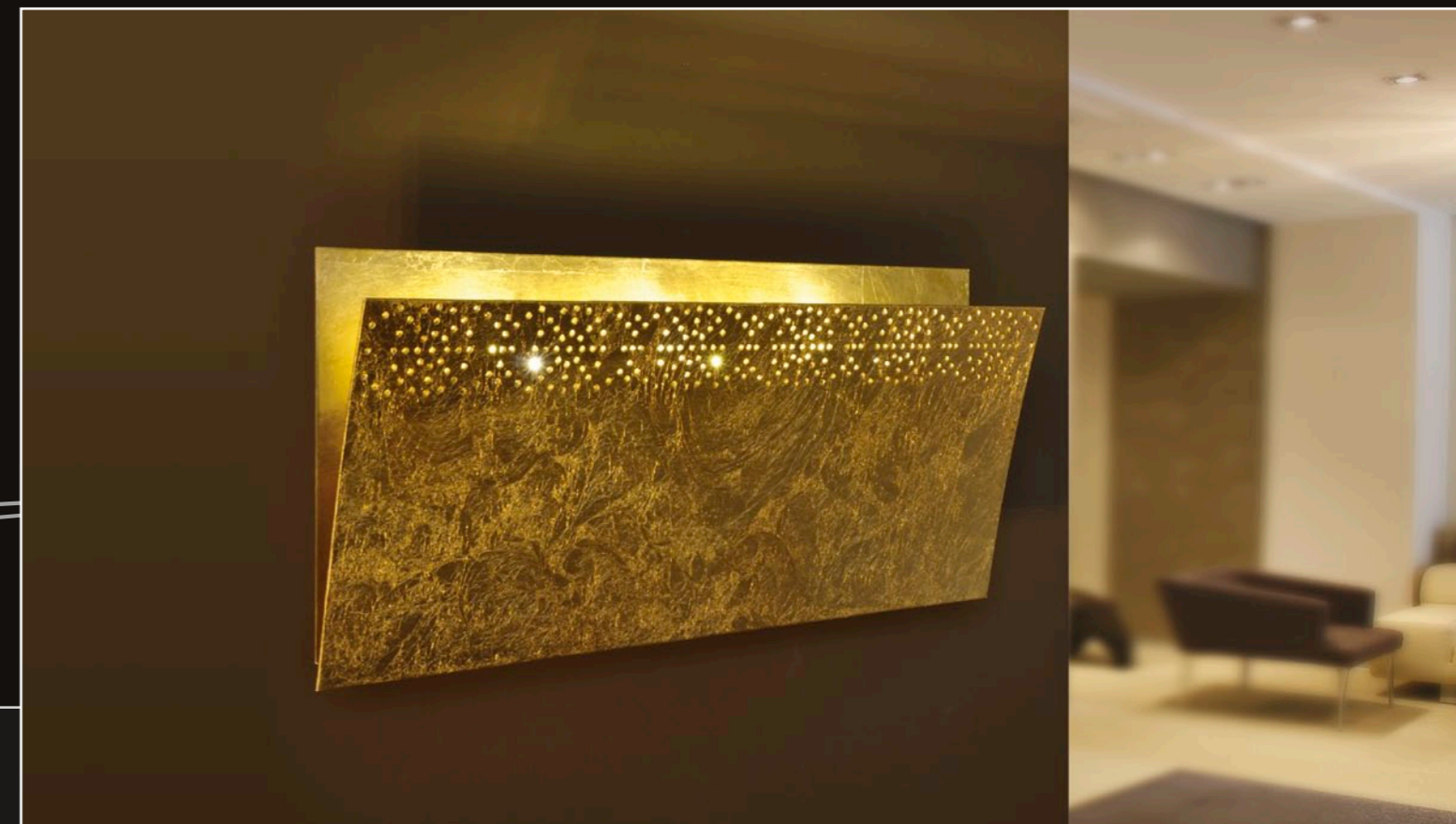
→ **1871/A1 MARRAKECH**
Oro decapé
 Glass 592 - h cm 32x44x13
 Hal max 150W R7s



TWIST / VIRGOLA

designers Arch. Marzia Bandini e Arch. Massimo Sacconi





↑ **1855/A2L VIRGOLA Gesso**
h cm 25x6x8
2 x 1,2W LED

↗ **1855/A2P VIRGOLA Oro fris **
h cm 16x10x10
2 x 1,2W LED

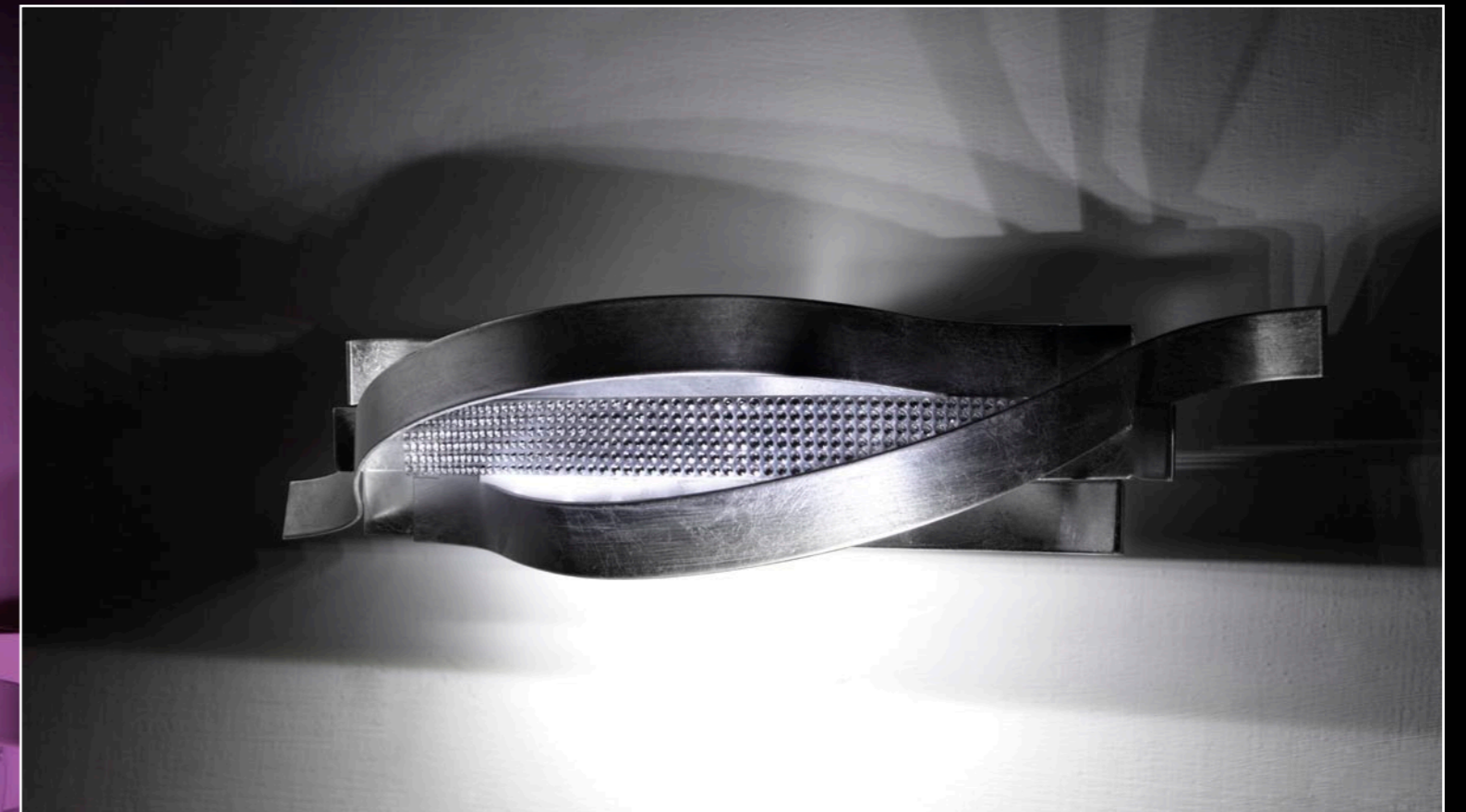
→ **1855/A3 VIRGOLA Oro fris **
h cm 13x8x30
3 x 1,2W LED



↑ **1857/3PL TWIST Oro**
Glass 590 - h cm 21x50X59
Hal 3 x max 150W E27

↗ **1857/A2 TWIST Argento**
h cm 7x33x10
5 W LED + 0,5W strip LED

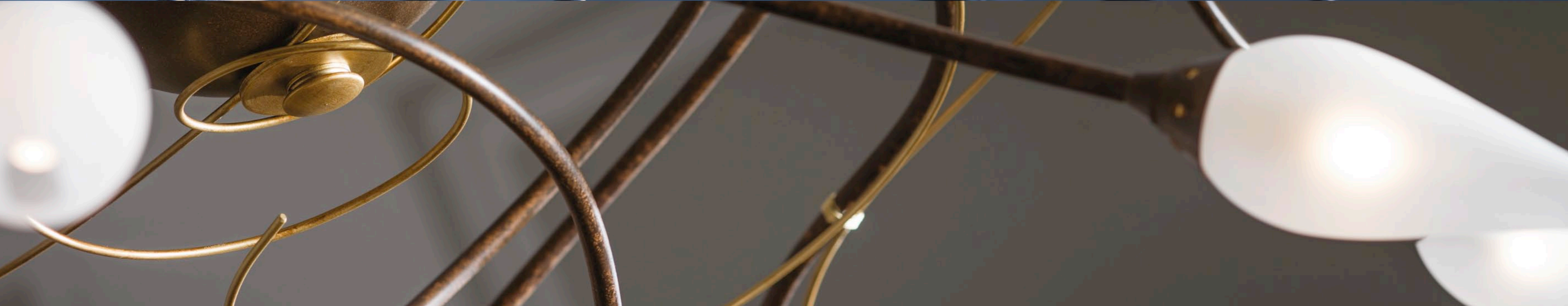
→ **1855/A1E VIRGOLA Oro fris **
h cm 16x8x5
1,2W LED





ARMONIA

designer Arch. Leonardo Scagli





↙ **1832/3PL ARMONIA**
Tabacco oro
Glass 505 - Ø 42x25 h
Hal 3 x max 40W G9

← **1832/A2 ARMONIA**
Tabacco oro
Glass 505 - h 43x34x16
Hal 2 x max 40W G9

↘ **1832/B1 ARMONIA**
Tabacco oro
Glass 505 - Ø cm 12x42 h
Hal max 40W G9

↑ **1832/6 ARMONIA**
Tabacco oro
Glass 505 - h cm 38x90x52
Hal 6 x max 40W G9

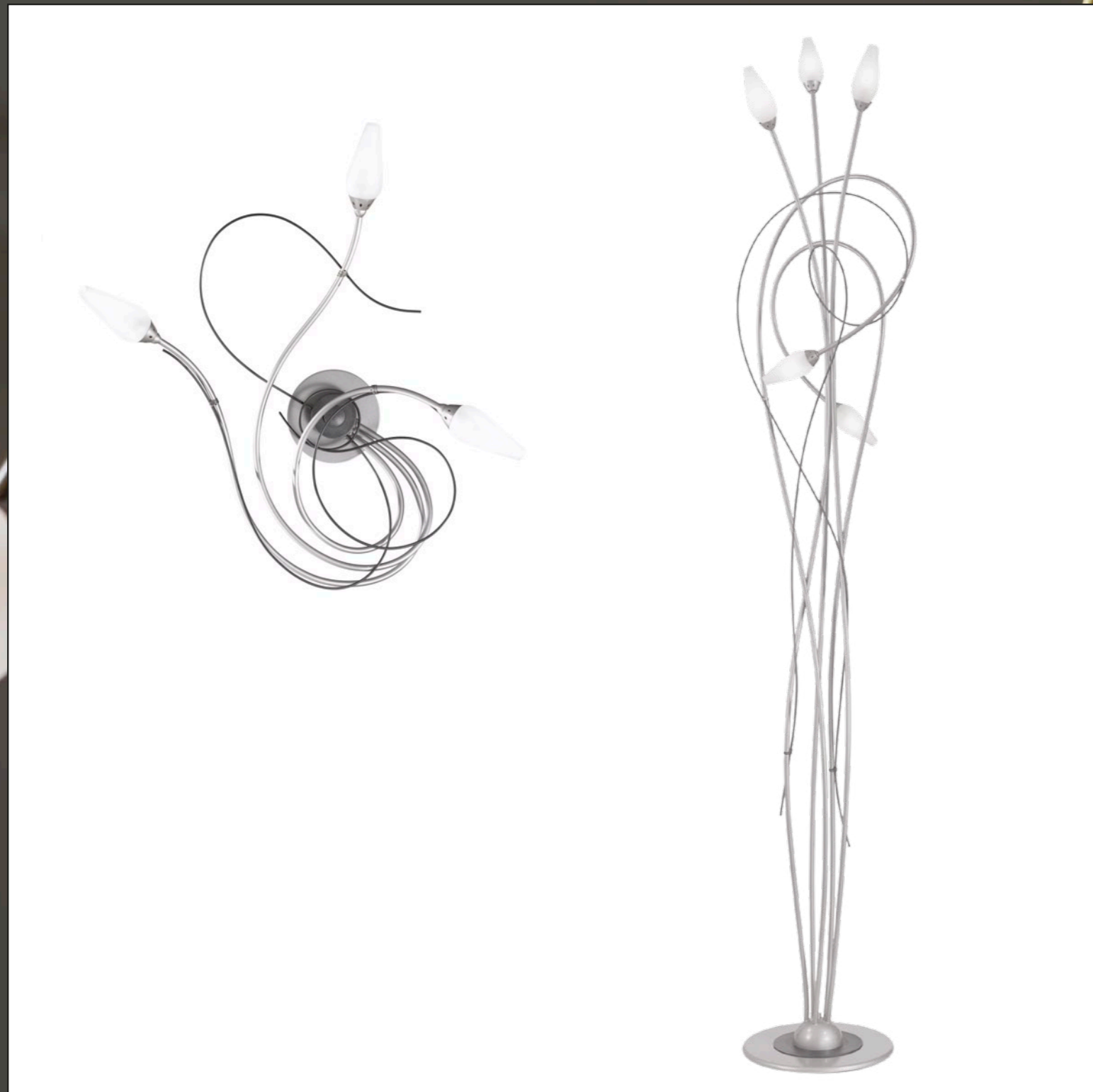


↙ **1832/3PL ARMONIA**
Tabacco oro
Glass 505 - Ø 42x25 h
Hal 3 x max 40W G9

← **1832/A2 ARMONIA**
Tabacco oro
Glass 505 - h 43x34x16
Hal 2 x max 40W G9

↘ **1832/B1 ARMONIA**
Tabacco oro
Glass 505 - Ø cm 12x42 h
Hal max 40W G9

↑ **1832/6 ARMONIA**
Tabacco oro
Glass 505 - h cm 38x90x52
Hal 6 x max 40W G9

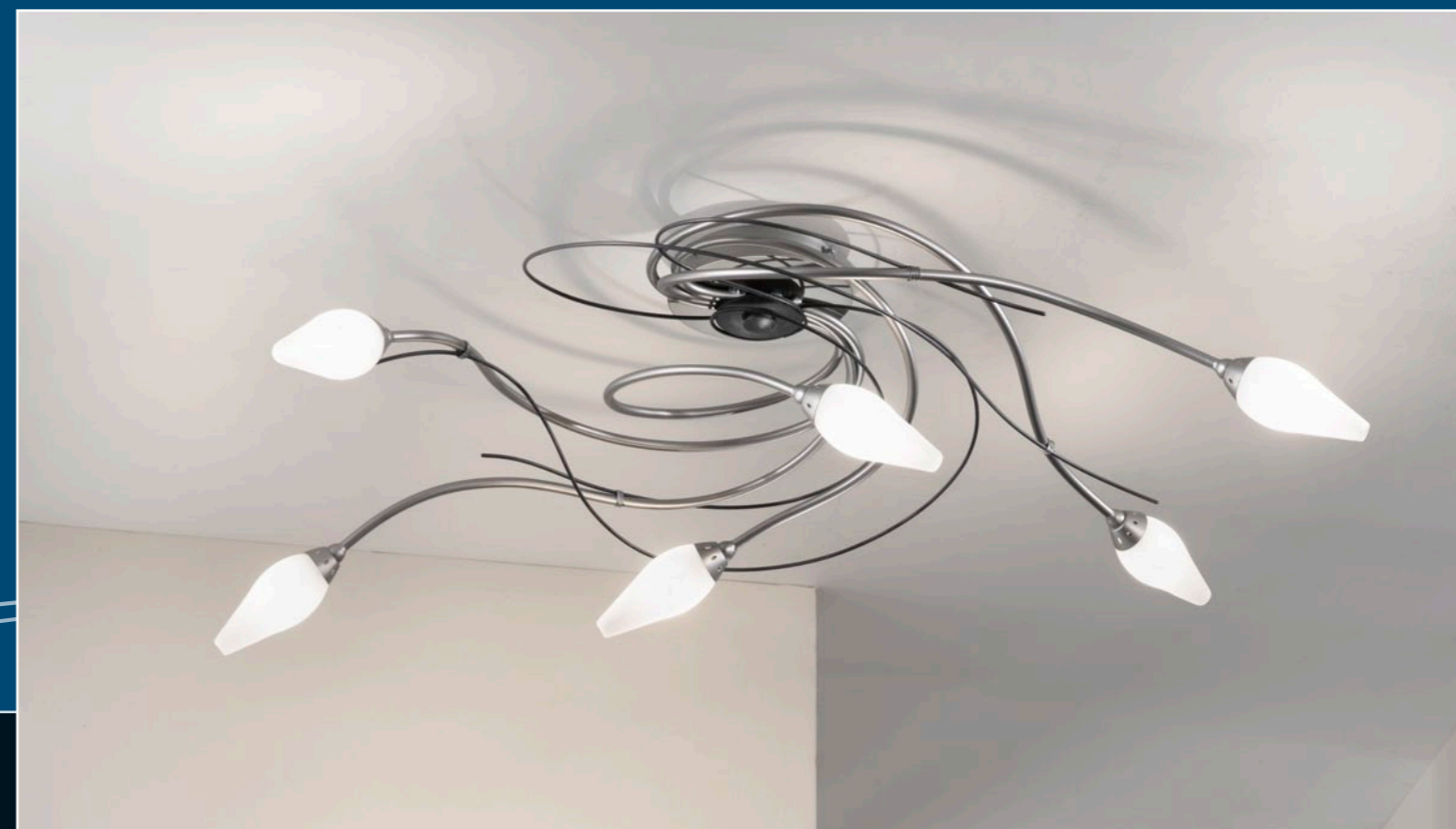


↑ **1832/A3 ARMONIA**
Ral ardesia
 Glass 505 - h cm 60x44x25
 Hal 3 x max 40W G9

↑ **1832/P5 ARMONIA**
Ral ardesia
 Glass 505 - h cm 195x62x50
 Hal 5 x max 40W G9

↗ **1832/8 ARMONIA**
Ral ardesia
 Glass 505 - Ø cm 90x42 h
 Hal 8 x max 40W G9

→ **1832/6PL ARMONIA**
Ral ardesia
 Glass 505 - h cm 32X90X52
 Hal 6 x max 40W G9





LOOP

designer Arch. Leonardo Scagli



↑ **1873/A2 LOOP Oro**
h cm 27x20x16
2 x 1,2W LED



→ **1873/3SG LOOP Oro**
Ø cm 75 x h min 60 - max 160
3 x Hal max 75W GU10



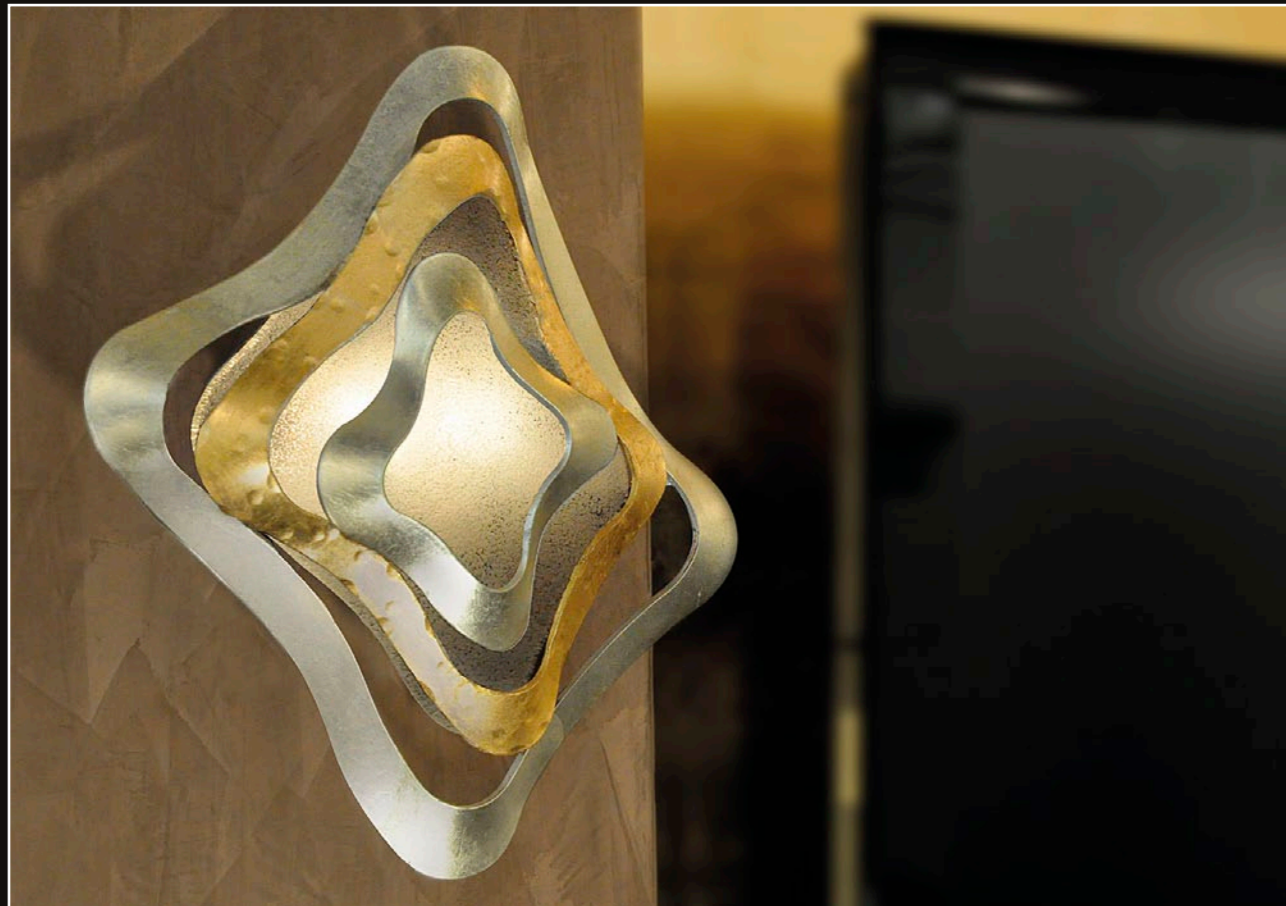


← **1873/3S LOOP Corten**
Ø cm 50 x h min 55 - max 100
3 x Hal max 50W GU10

↑ **1873/B2 LOOP Corten**
Ø cm 19x35 h
1 x 1,2W LED + 1 x 3W LED

GIOIELLO

designer Arch. Leonardo Scagli



↙ **1844/A2 GIOIELLO Argento oro**
 Glass 548 - h cm 30x30x9
 Hal 2 x max 40W G9

↘ **1844/A2 GIOIELLO Bronzo cannella**
 Glass 548 - h cm 30x30x9
 Hal 2 x max 40W G9

↑ **1844/1S GIOIELLO Bronzo cannella**
 Glass 550-552 - h max cm 80x62x58
 max 30W Electronic Lamp E27



← **1844/2PL GIOIELLO Ral nero**
Glass 550 - h cm 25x62x58
2 x max 30W Electronic Lamp E27

↑ **1844/SP GIOIELLO Ral nero**
Glass 551
h cm 80x74



DOGE

designers Arch. Marzia Bandini e Arch. Massimo Sacconi



↑ **1849/3S DOGE Oro décapé**
 Glass 560 - Ø cm 62 x h min 50 - max 120
 Hal 3 x max 150W E27

↗ **1849/3PLG DOGE Ruggine oro**
 Glass 560 - Ø cm 70x26 h
 Hal 3 x max 150W E27

→ **1849/AM DOGE Ruggine oro**
 Glass 561 - h cm 30x35x20
 Hal max 150W R7s





IRIDE

designer Alberto Scagli





↑ **1698/8 IRIDE Brina**
 Ø cm 88x77 h
 8 x max 60W E14



→ **1698/12 IRIDE Brina**
 Ø cm 100x90 h
 12 x max 60W E14



↑ **1698/8 IRIDE Oro**
 Ø cm 88x77 h
 8 x max 60W E14

↗ **1698/5 IRIDE Ardesia**
 Ø cm 66x64 h
 5 x max 60W E14

→ **1698/A2 IRIDE Ardesia**
 h cm 40x38x23
 2 x max 60W E14





PARFUM

designer Arch. Leonardo Scagli





↑ **1867/10 PARFUM Ottone nichel**
 Glass 589 - Ø cm 80x55 h
 Hal 10 x max 40W G9

→ **1867/5PL PARFUM Ottone nichel**
 Glass 589 - Ø cm 55x32 h
 Hal 5 x max 40W G9

↗ **1867/5 PARFUM Ottone nichel**
 Glass 589 - Ø cm 55x40 h
 Hal 5 x max 40W G9





↑ **1867/10PL PARFUM**
Acciaio ardesia
 Glass 589 - Ø cm 80x41 h
 Hal 10 x max 40W G9

↗ **1867/3PL PARFUM**
Acciaio ardesia
 Glass 589 - Ø cm 40x22 h
 Hal 3 x max 40W G9

→ **1867/A2 PARFUM**
Acciaio ardesia
 Glass 589 - h cm 30x28x22
 Hal 2 x max 40W G9

↘ **1867/B1 PARFUM**
Acciaio ardesia
 Glass 589 - Ø cm 18x35 h
 Hal max 40W G9

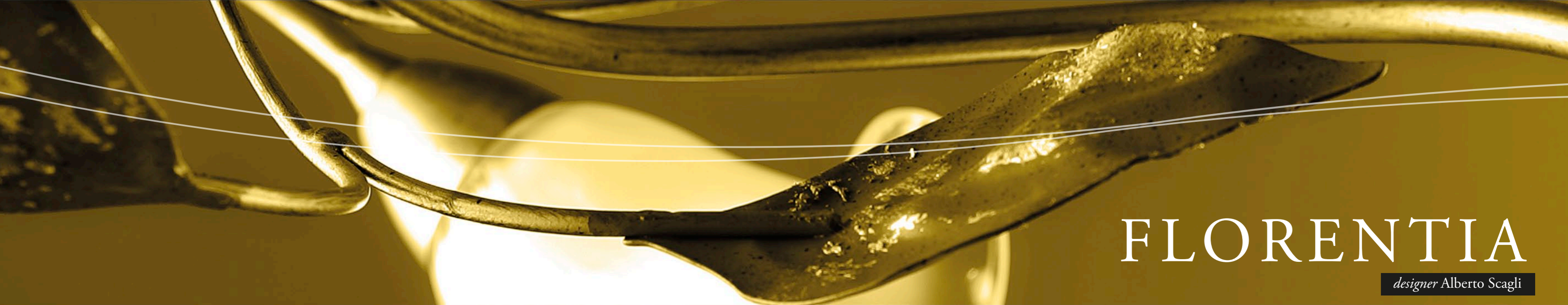




↙ **1867/5S PARFUM Ottone nichel**
 Glass 589 - Ø cm 55x32 h
 Hal 5 x max 40W G9

← **1867/A2 PARFUM Ottone nichel**
 Glass 589 - h cm 30x28x22
 Hal 2 x max 40W G9

↑ **1867/10S PARFUM Ottone nichel**
 Glass 589 - Ø cm 80x55 h
 Hal 10 x max 40W G9



FLORENTIA

designer Alberto Scagli





↑ **1814/6 FLORENTIA**
Mogano oro
Glass 413 - Ø cm 77x35 h
6 x max 40W E14

↗ **1814/P4 FLORENTIA**
Mogano oro
Glass 413 - Ø cm 40x187 h
4 x max 40W E14

→ **1814/6PL FLORENTIA**
Mogano oro
Glass 413 - Ø cm 76x33 h
6 x max 40W E14





← **1814/B1 FLORENTIA**
Porpora
 Glass 413 - Ø cm 20x36 h
 max 40W E14

↖ **1814/A2 FLORENTIA**
Porpora
 Glass 413 - h cm 35x25x14
 2 x max 40W E14

↑ **1814/9 FLORENTIA**
Porpora
 Glass 413 - Ø cm 96x43 h
 9 x max 40W E14

↑ **1814/3PL FLORENTIA**
Porpora
 Glass 413 - Ø cm 52x32 h
 3 x max 40W E14



TUSCANIA / INTRECCIO

designers Arch. Marzia Bandini e Arch. Massimo Sacconi





↑ **1507/3 TUSCANIA Peltro**
Glass 54 - Ø cm 76x73 h
Hal 3 x max 150W E14

→ **1507/AM TUSCANIA Oro**
Glass 112 - h cm 42x30x12
Hal max 150W R7s

↗ **1507/1 TUSCANIA Oro**
Glass 31 - Ø cm 46x62 h
Hal max 250W E27





↖ **1660/3PL INTRECCIO Peltro**
Glass 285 - Ø cm 60x56 h
Hal 3 x max 150W E27



← **1660/1PL INTRECCIO Peltro**
Glass 282 - Ø cm 52x35 h
Hal max 250W E27

↑ **1660/P INTRECCIO Peltro**
Glass 283 - Ø cm 56x181 h
Hal max 250W E27



SHANGHAI

designer Arch. Leonardo Scagli



← **1870/6PL SHANGHAI**
Brownies oro
 Glass 591 - Ø cm 70x20 h
 Hal 6 x max 40W G9



↙ **1870/P5 SHANGHAI**
Brownies oro
 Glass 591 - Ø cm 35x195 h
 Hal 5 x max 40W G9

↑ **1870/8 SHANGHAI**
Brownies oro
 Glass 591 - Ø cm 90x52 h
 Hal 8 x max 40W G9



← **1870/A2 SHANGHAI**
Bianco mat nichel
Glass 591 - h cm 62x21x9
Hal 2 x max 40W G9

↙ **1870/SP SHANGHAI**
Bianco mat nichel
h cm 100x64

↑ **1870/6 SHANGHAI**
Antracite nichel
Glass 591 - Ø cm 60x18 h
Hal 6 x max 40W G9

↑ **1870/3PL SHANGHAI**
Antracite nichel
Glass 591 - Ø cm 60x18 h
Hal 3 x max 40W G9



LUNA
designer Arch. Leonardo Scagli





↑ **1865/9 LUNA**
Ottone nichel
Glass 576 - Ø cm 76x30 h
Hal 9 x max 40W G9

↗ **1865/3 LUNA**
Ottone nichel
Glass 576 - Ø cm 60x20 h
Hal 3 x max 40W G9

→ **1865/A2 LUNA**
Ottone nichel
Glass 576 - h cm 29x40x20
Hal 2 x max 40W G9

↘ **1865/A1 LUNA**
Ottone nichel
Glass 576 - h cm 28x11x16
Hal max 40W G9





↑ **1865/6 LUNA**
Moka nichel
Glass 576 - Ø cm 70x22 h
Hal 6 x max 40W G9

↑ **1865/5PL LUNA**
Moka nichel
Glass 576 - Ø cm 62x22 h
Hal 5 x max 40W G9

→ **1865/B2 LUNA**
Moka nichel
Glass 576 - Ø cm 32x41 h
Hal 2 x max 40W G9

↗ **1865/P5 LUNA**
Moka nichel
Glass 576 - Ø cm 50x184 h
Hal 5 x max 40W G9





FONTANA

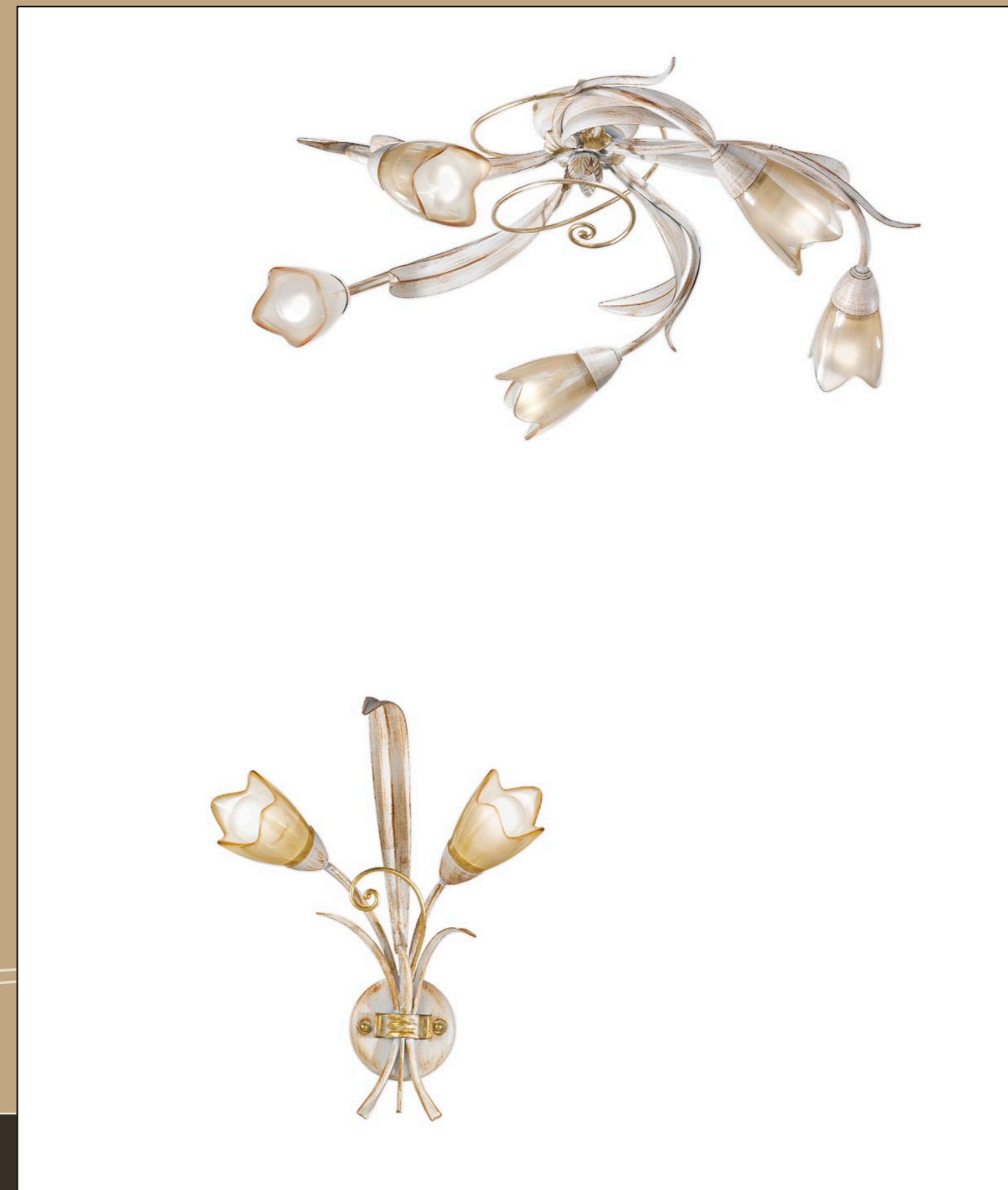
designer Arch. Leonardo Scagli



↑ **1805/9 FONTANA Faggio**
Glass 391 - Ø cm 78x56 h
9 x max 40W E14

→ **1805/A2 FONTANA Faggio**
Glass 391 - cm 37x30x20
2 x max 40W E14

↗ **1805/5PL FONTANA Faggio**
Glass 391 - Ø cm 66x24 h
5 x max 40W E14





← **1805/B1 FONTANA Salvia**
 Glass 235 - h cm 41x18x16
 max 40W E14



↖ **1805/6 FONTANA Salvia**
 Glass 235 - Ø cm 62x51 h
 6 x max 40W E14



↑ **1805/A2 FONTANA Salvia**
 Glass 235 - cm 37x30x20
 2 x max 40W E14



FUTURA

designer Alberto Scagli



↑ **1536/A1 FUTURA Peltro**
Glass 121 - h cm 37x16x28
Hal max 150W E14



→ **1565/24 FUTURA Peltro oro**
Glass 373 - Ø cm 190x183 h
24 x max 60W E14



← **1565/16 FUTURA Terra oro**
Glass 165 - Ø cm 120x105 h
16 x max 60W E14

↑ **1565/10 FUTURA Oro**
Glass 116 - Ø cm 86x82 h
10 x max 60W E14



← **1565/A2 FUTURA Brina**
Glass 116 - h cm 44x37x21
2 x max 60W E14

↖ **1565/5 FUTURA Brina**
Glass 116 - Ø cm 66x70 h
5 x max 60W E14

↑ **1565/A2 FUTURA Terra oro**
Glass 165 - h cm 44x37x21
2 x max 60W E14



MISS IRONY

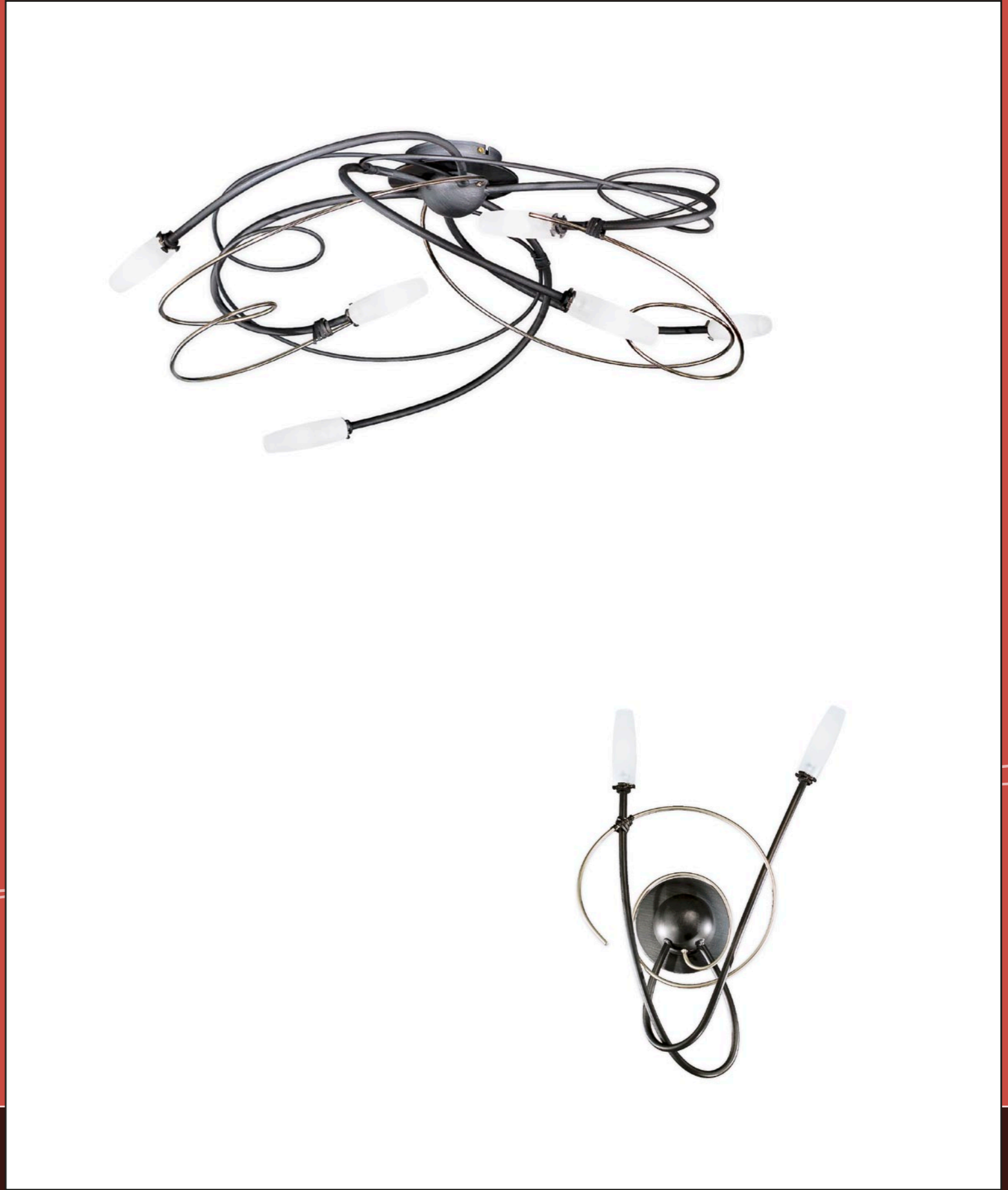
designers Arch. Marzia Bandini e Arch. Massimo Sacconi



↑ **1681/8 MISS IRONY**
Ardesia nichel
Glass 347 - h cm 40x110x95
Hal 8 x max 40W G9

↗ **1681/6PL MISS IRONY**
Ardesia nichel
Glass 347 - h cm 33x75x67
Hal 6 x max 40W G9

→ **1681/A2P MISS IRONY**
Ardesia nichel
Glass 347 - h cm 50x30x18
Hal 2 x max 40W G9

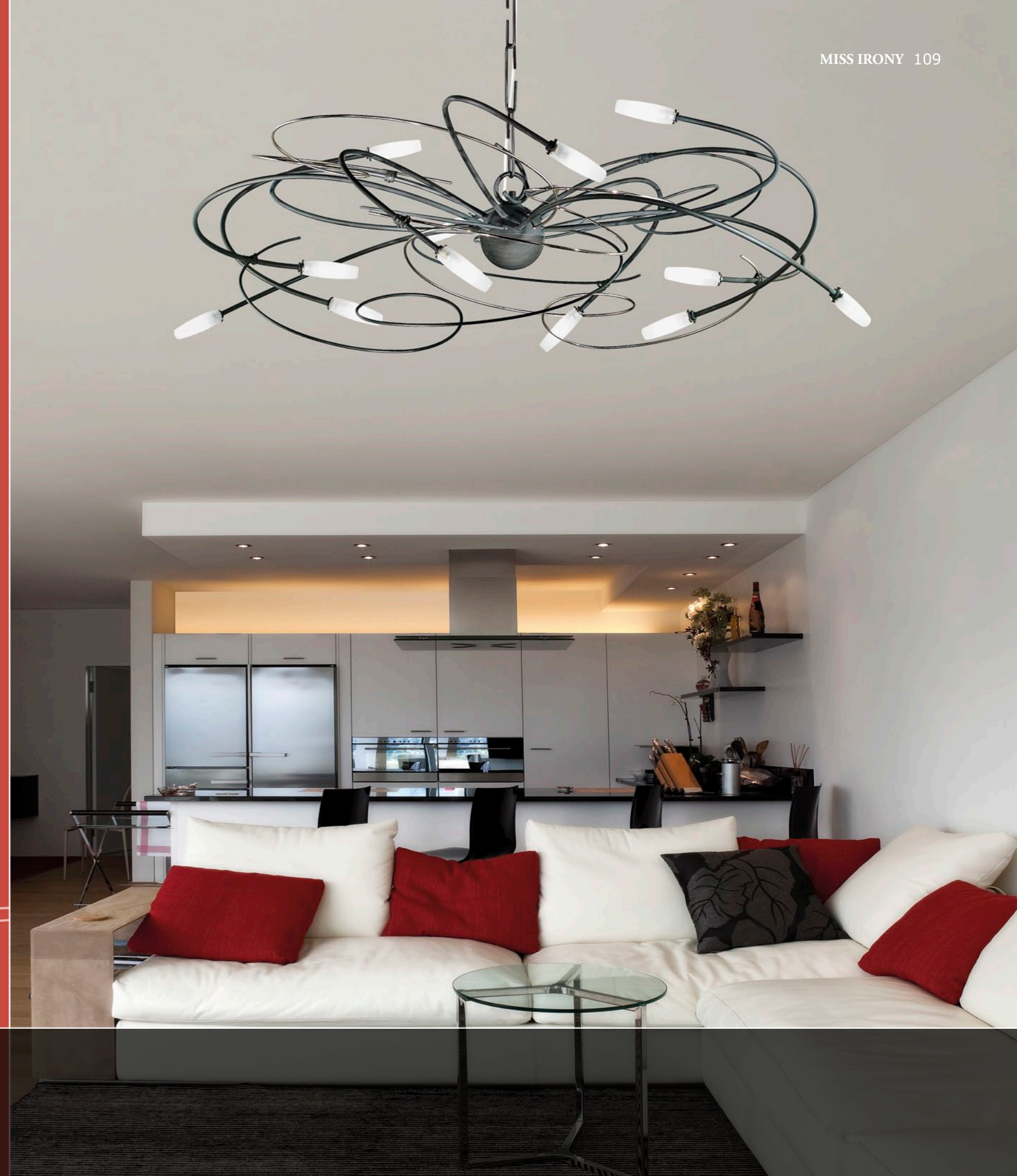




↑ **1681/8PL MISS IRONY**
 Ardesia nichel
 Glass 347 - h cm 33x110x95
 Hal 8 x max 40W G9

↗ **1681/6 MISS IRONY**
 Ardesia nichel
 Glass 347 - h cm 40x75x67
 Hal 6 x max 40W G9

→ **1681/12 MISS IRONY**
 Ardesia nichel
 Glass 347 - h cm 46x135x112
 Hal 12 x max 40W G9



GRAPHIC DESIGN
STUDIO BENVENUTI - FIRENZE

PHOTOGRAPHY
COM & MEDIA - SCANDICCI
FOTO STUDIO AG DI ALESSANDRO GHEDINA - FIRENZE
QUASAR - PIOMBINO DESE
SM PHOTO ART - FIRENZE

PRINTED ON MARCH 2013 BY
FEDERIGHI COLORGRAFICHE - CERTALDO

ACKNOWLEDGEMENTS
KEOMA SALOTTI - MATERA



All our production complies with community directives on:

"low voltage"(2006/95/CE)
CEI EN 60598-1 VIII edizione
CEI EN 60598-1/A1: 2007
CEI EN 60598-2-1 II edizione
CEI EN 60598-2-4 IV edizione
"electromagnetic compatibility"(EMC 2004/108/CE)
CEI EN 55015 V ed.var. A1 e A2
CEI EN 61000-3-2 IV ed.
CEI EN 61000-3-3 I ed. var. A1
CEI EN 61000-4-2 I ed. var. A1 e A2
CEI EN 61000-4-4 II ed.
CEI EN 61000-4-5 II ed.
CEI EN 61000-4-6 I ed. var. A1
CEI EN 61000-4-3 III ed.
CEI EN 61000-4-11 II ed.
CEI EN 61547 I ed. var. A1

RHOS 2002/95 RAE 2002/96.

GOST-R
GOST-UA



MASCA

Masca s.r.l.

Showroom and Laboratories

Via Pistoiese, 1 - 50013 San Donnino (Florence) - ITALY

Tel. +39 055.8999155 +39 055.8961839

Fax +39 055.8998565

Web site: www.masca.it

Mail address: masca@masca.it